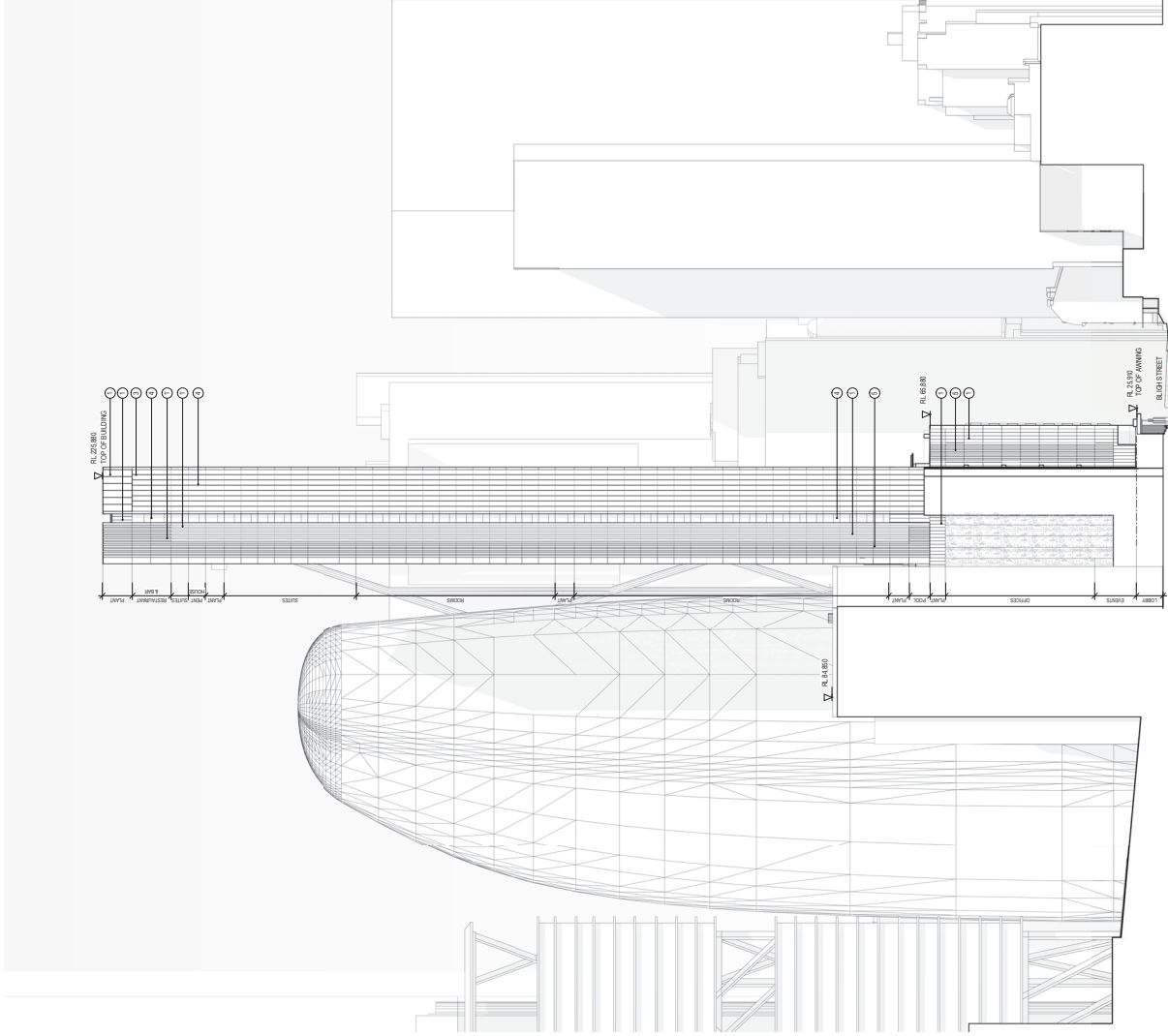
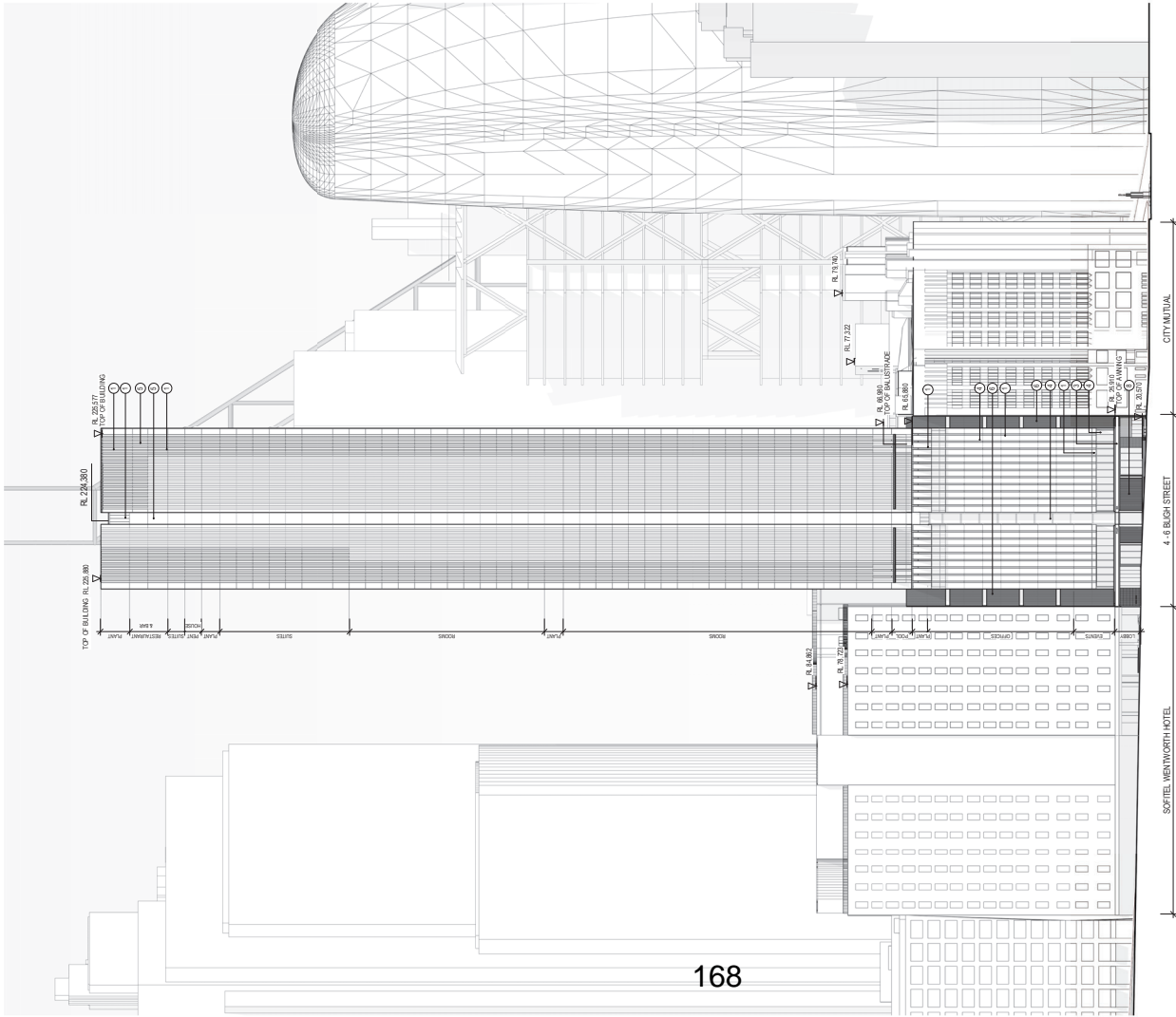


Attachment C2

Selected Drawings



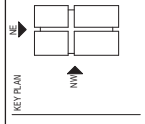
1 NORTH WEST ELEVATION

2 NORTH EAST ELEVATION

Notes

Client	Citywide © World Budget 2018
Date	19.12.22
SSDA Submission	14.02.23
SSDA RFP Response	21.02.23
SSDA RFP Response	21.02.23

Contractor must verify all dimensions on site before commencing work on preliminary shop drawings.
Do not scale drawings.



- LEGEND
- (1) Copper colored stainless steel - Rinnor Royal Gold Chrome
 - (2) Dark bronze colored stainless steel - Rinnor Black/Dark Bronze
 - (3) Clear glass
 - (4) Bronze colored glass
 - (5) Bronze colored anodised aluminium - Universal Anodisers Satin Espresso
 - (6) Oxidised copper - K&E TECO Palma verdigris copper
 - (7) Sandstone cladding

Project
4-6 Bligh Street
Client
Holdmark NSW Pty Ltd

Sheet title
Elevations
North East & North West Elevation

Sheet number
DA3201

Scale
1:500

FOR SSDA

W-B
WOODS BAGOT

Project number
121736

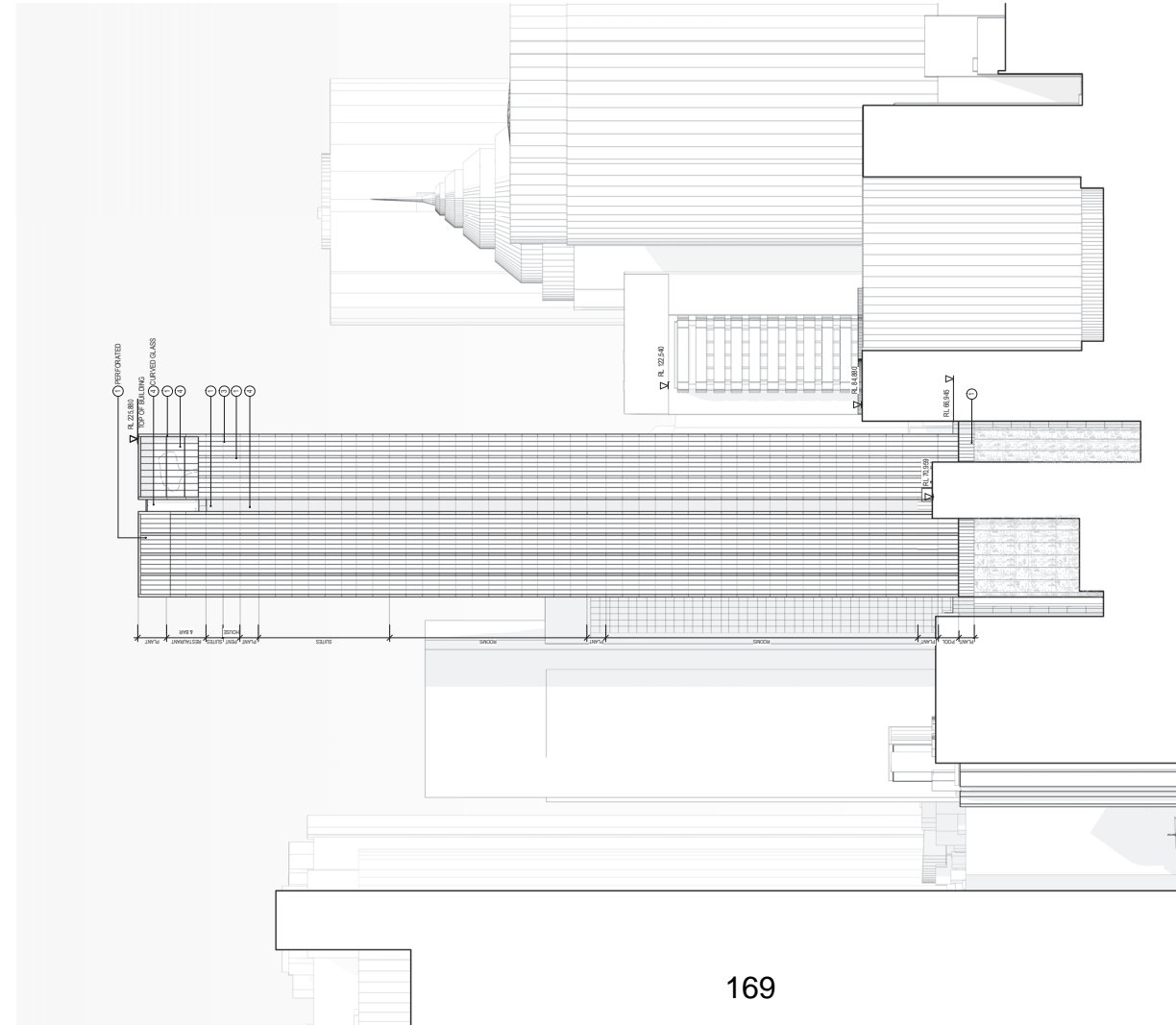
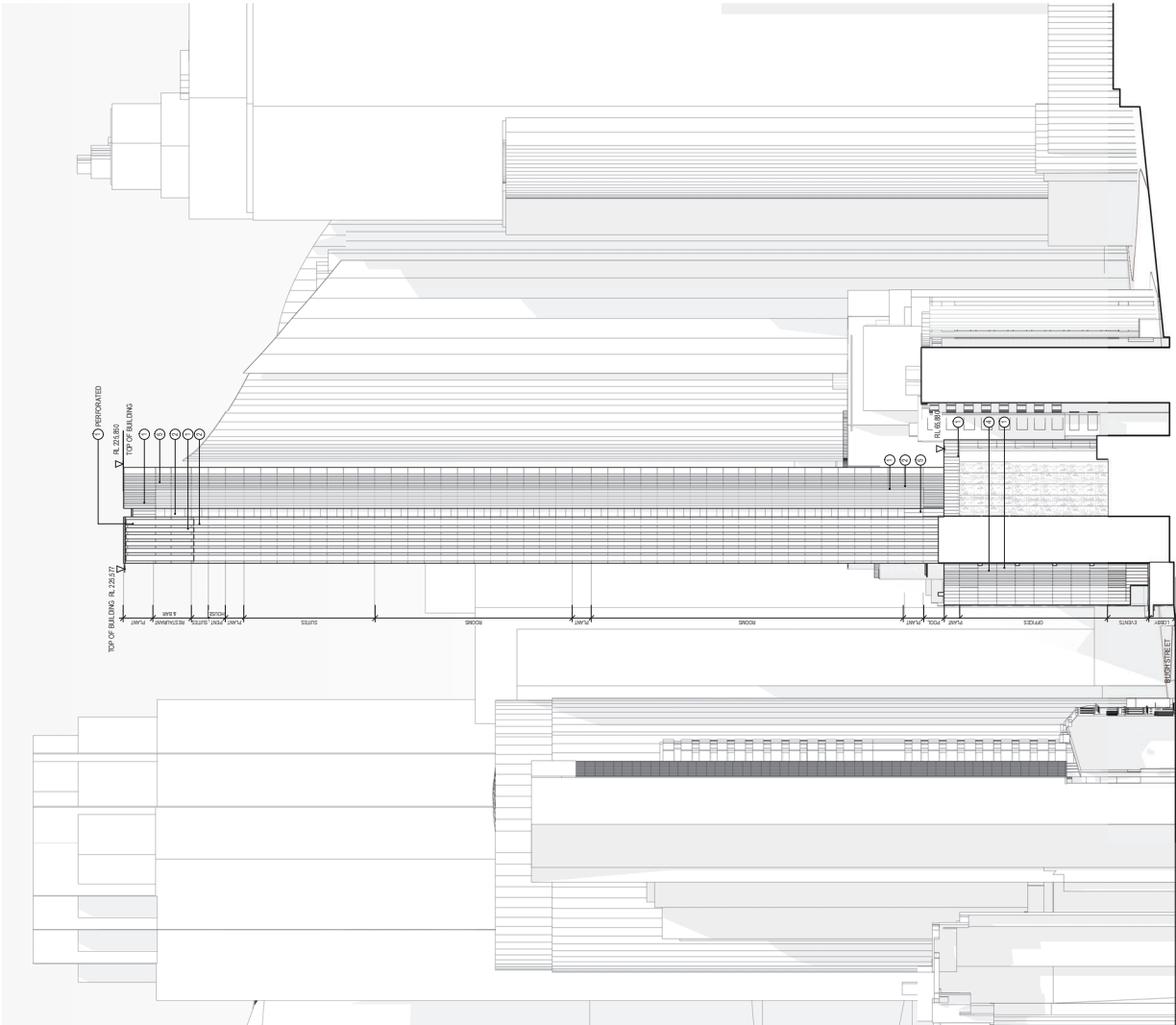
Client
TD

Drawn
KD

Checked
A1

Scale
1:500

FOR SSDA



1 SOUTH WEST ELEVATION

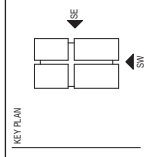
2 SOUTH EAST ELEVATION

Notes

Copyright © Woods Bagot 2018
 All rights reserved.
 No material may be reproduced without prior permission.
 Contractor must verify all dimensions on site before commencing work to prevent any shop drawings.
 Do not scale drawings.

Revised

Date	By	Reason
18.12.22	SSA	SSA Submission
14.02.23	SSA	SSA R6 Response
21.12.23	SSA	SSA R6 Response



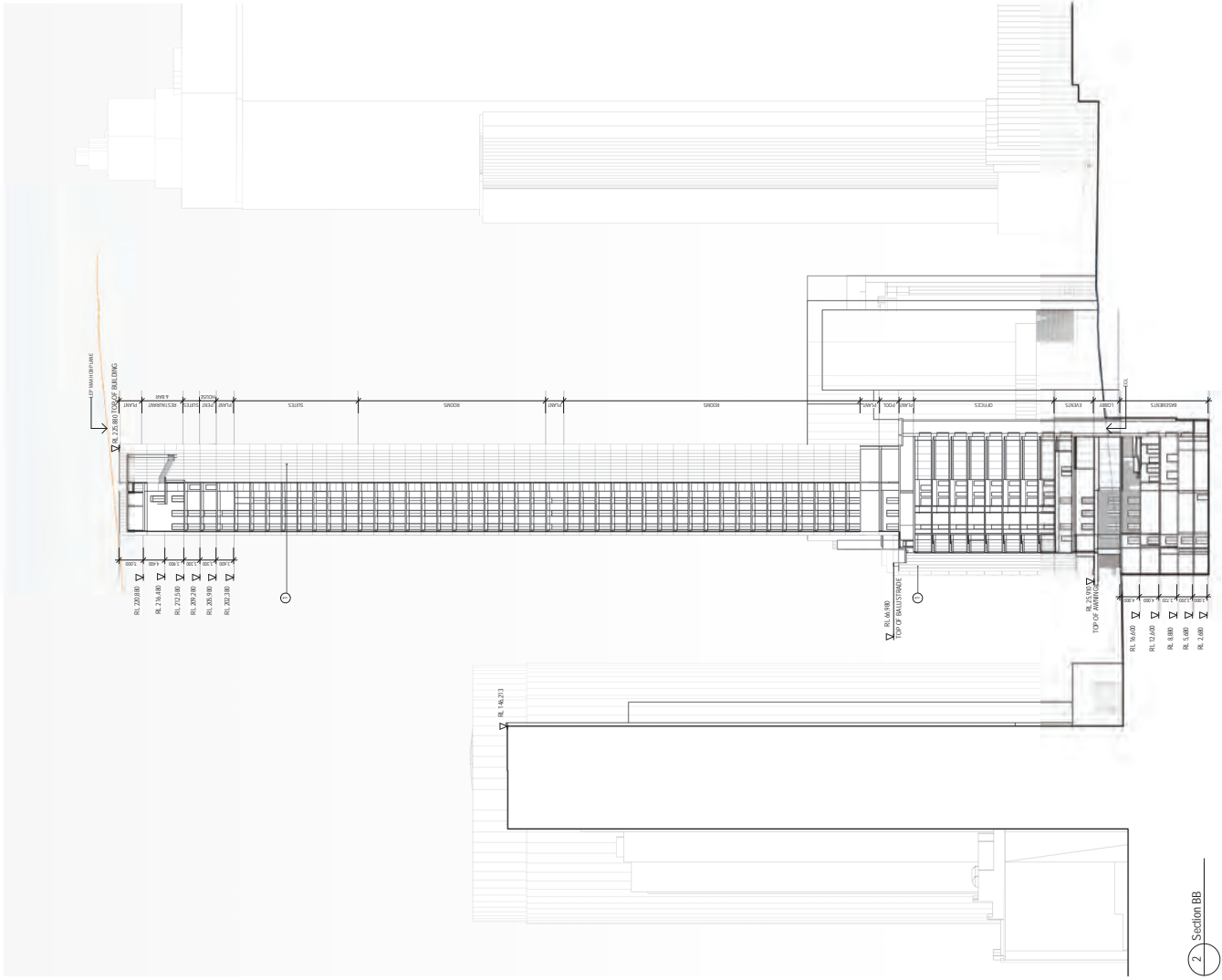
- LEGEND**
- (1) Copper clad and stainless steel - Remy Ray Copper Cladding
 - (2) Dark bronze powder coated stainless steel - Remy Ray Dark Bronze
 - (3) Clear glass
 - (4) Clear glass
 - (5) Powder dark bronze anodised aluminium - Universal Anodising Self-Expanding
 - (6) Oxidised copper - K&E TECU/Patina verdigris copper
 - (7) Stainless cladding

Woods Bagot
W-B
 WOODS BAGOT

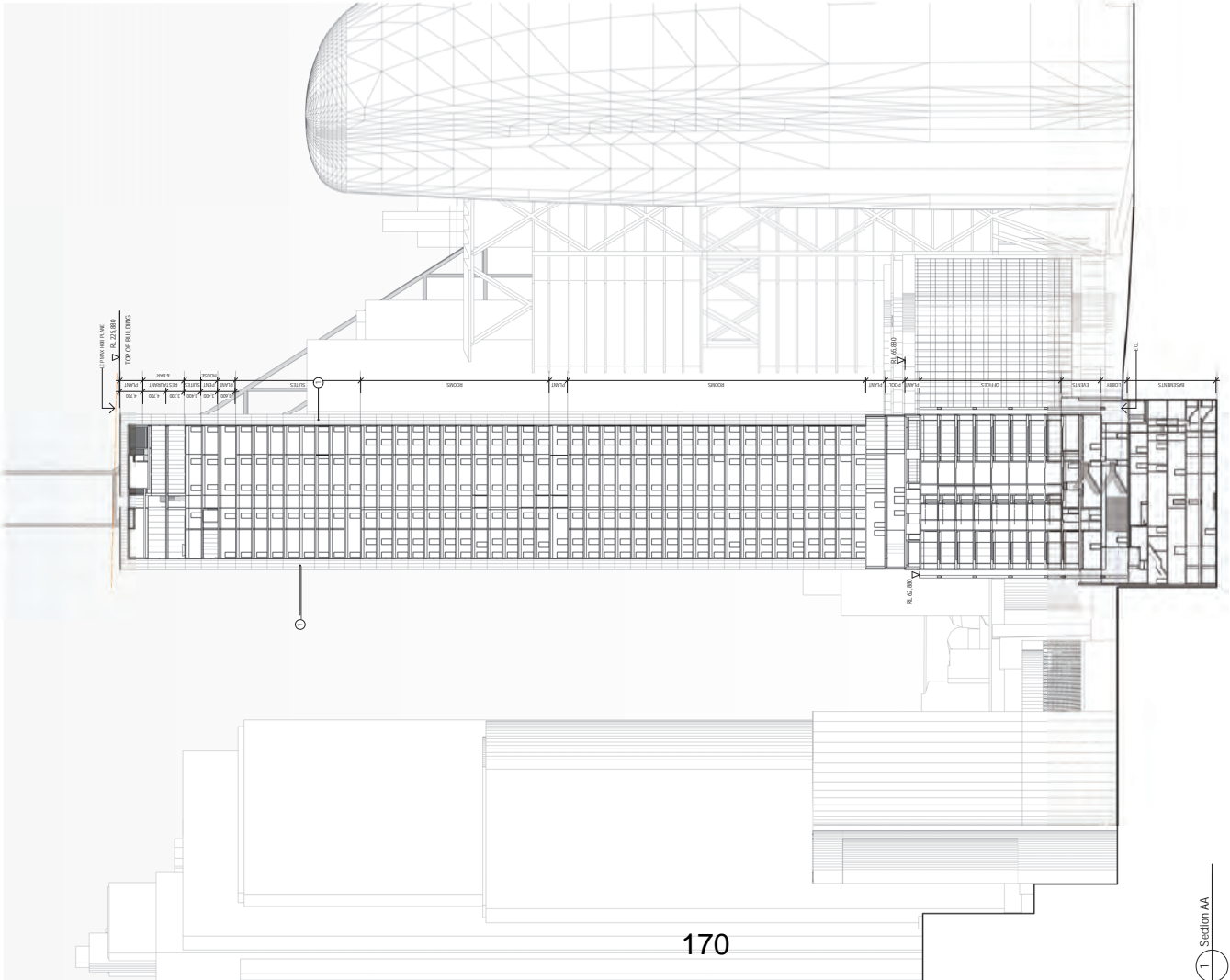
Project Number: 121736
 Client: Holdmark NSW Pty Ltd

Sheet Title: Elevations South East & South West Elevations
 Sheet Number: DA3202
 Revision: C

Scale: 1:500
 Format: A1
 Drawing: KD
 Title Block: FOR SSDA



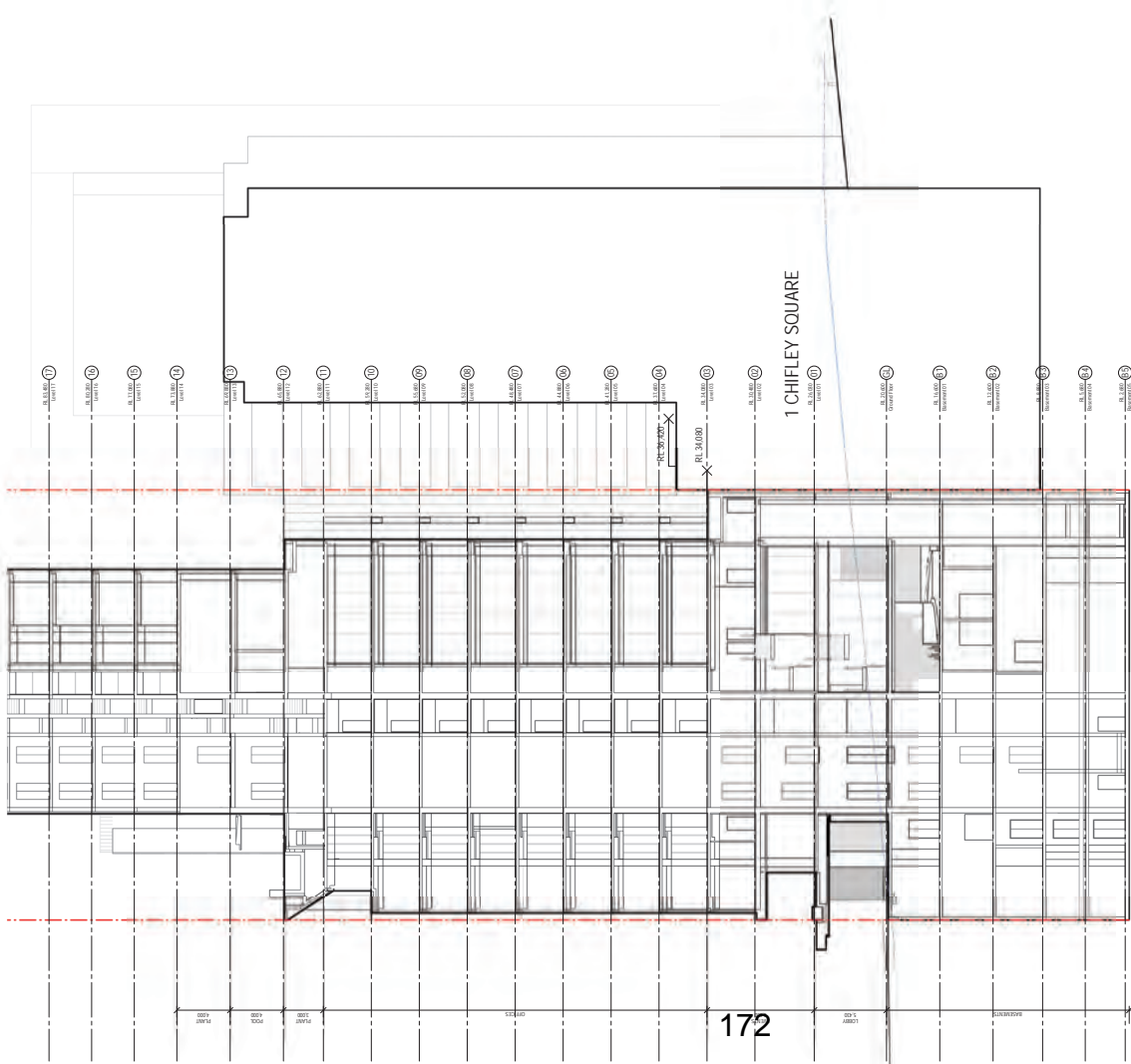
2 Section BB



1 Section AA

<p>Revised by A. J. J. J.</p> <p>Drawn by S. S. S. S.</p> <p>Checked by S. S. S. S.</p> <p>Date 14/07/2024, 05:08 PM</p>	<p>Project 4-6 Bleigh Street</p> <p>Client Holdmark NSW Pty Ltd</p>	<p>Sheet Sections Section AA and BB</p> <p>Drawn by DA3301</p> <p>Checked by TD</p> <p>Scale 1:500</p> <p>For FOR SSDA</p>	<p>Woods Bagot W-B™</p> <p>Project Number 121736</p> <p>Drawn by S. S. S. S.</p> <p>Checked by TD</p> <p>Date 14/07/2024, 05:08 PM</p>
--	---	--	--

<p>Notes</p> <p>1) Check all dimensions against the approved drawings.</p> <p>2) All dimensions are in millimeters unless otherwise stated.</p> <p>3) All dimensions are to the center of the member unless otherwise stated.</p> <p>4) All dimensions are to the face of the member unless otherwise stated.</p> <p>5) All dimensions are to the center of the member unless otherwise stated.</p> <p>6) All dimensions are to the face of the member unless otherwise stated.</p> <p>7) All dimensions are to the center of the member unless otherwise stated.</p> <p>8) All dimensions are to the face of the member unless otherwise stated.</p> <p>9) All dimensions are to the center of the member unless otherwise stated.</p> <p>10) All dimensions are to the face of the member unless otherwise stated.</p>	<p>LEGEND</p> <p>1) Copper colored stainless steel - Prime Rony Gold Cronax</p> <p>2) Copper colored textured stainless steel - Prime Rony Gold Pagan Cronax</p> <p>3) Dark bronze color stainless steel - Prime BlackDak Irono</p> <p>4) Dark bronze color stainless steel - Prime BlackDak Irono</p> <p>5) Bronze 901 Finish</p> <p>6) Bronze 901 Finish</p> <p>7) Ribbed dark bronze anodized aluminum - Universal Anodisers Salem Espresso</p> <p>8) Ribbed dark bronze anodized aluminum - Universal Anodisers Salem Espresso</p> <p>9) Stainless cladding</p>	<p>KEY PLAN</p>
--	---	-----------------

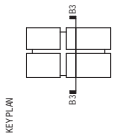


1 CHIFLEY SQUARE

172

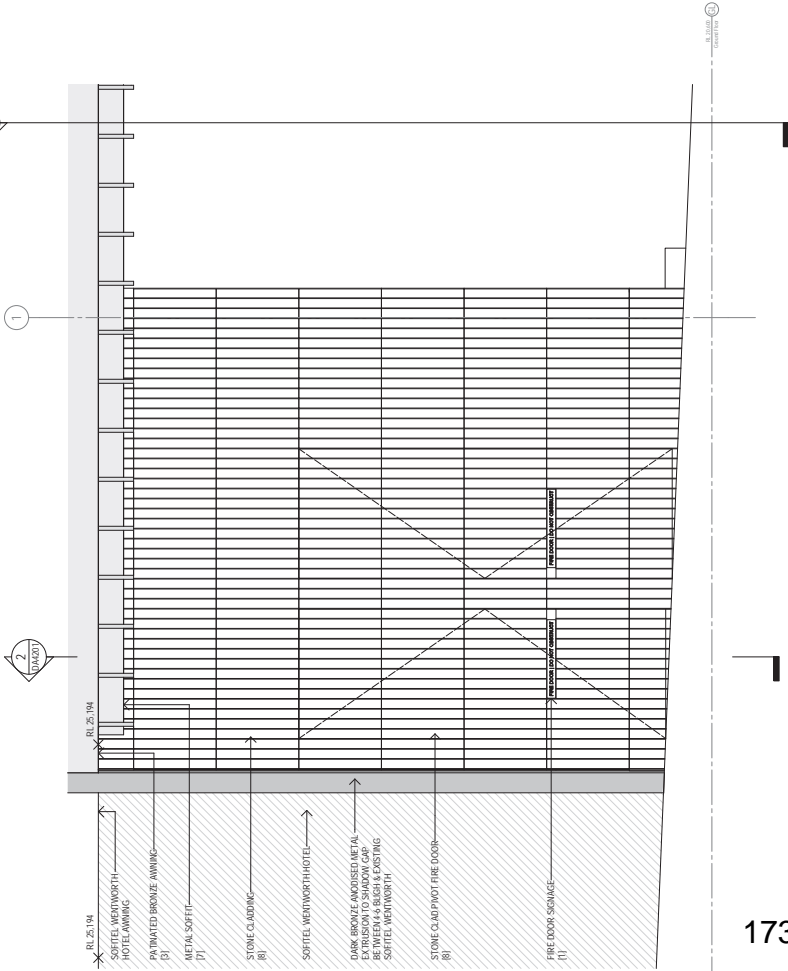
1 Section Bb_RFI_200_3

Sheet Sections Rear Facade Section 03	Checked by DA3303 Scale 1:200	Project 4-6 Bleigh Street	Client Holdmark NSW Pty Ltd
Issue W-B™ WOODS BAGOT	Drawn by TD	Project 4-6 Bleigh Street	Client Holdmark NSW Pty Ltd
Revision 121736	Scale 1:200	Checked by KD	Issue FOR SSDA

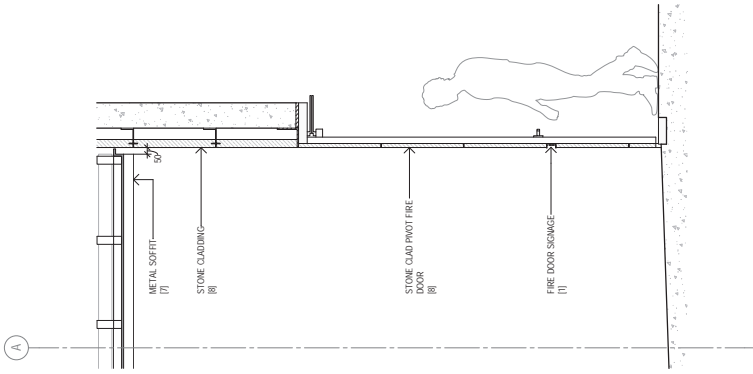


KEY PLAN

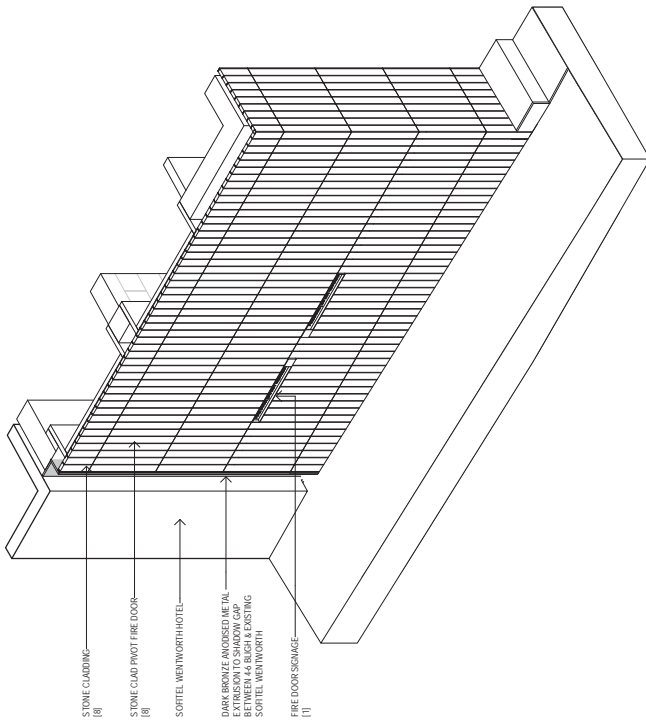
Notes
 Origin: © Woods Bagot 2018
 Date: 19/12/23
 Drawn by: SSDA/SP/1000
 Checked by: SSDA/SP/1000
 All material may be reproduced without prior permission
 Contractor must verify all dimensions on site before commencing
 Do not cut or aways



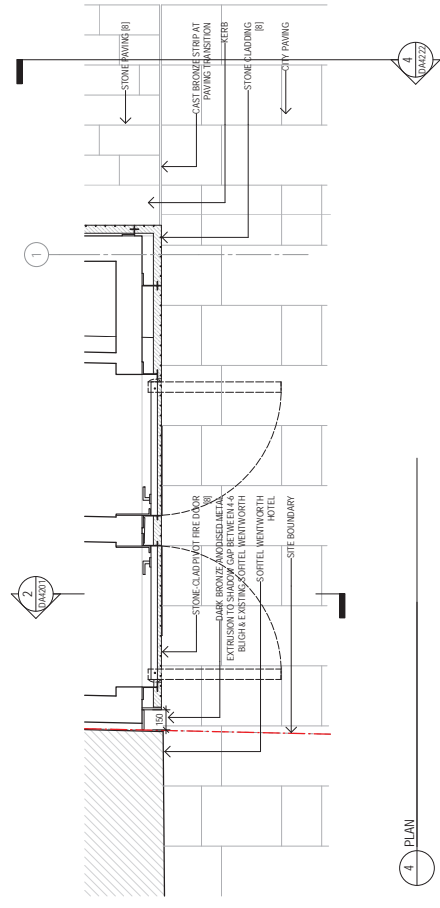
1. ELEVATION



2. SECTION



3. 3D VIEW



4. PLAN

Notes
 1) Original © Woods Bagot 2018
 2) All rights reserved
 3) All rights reserved
 4) All rights reserved
 5) All rights reserved
 6) All rights reserved
 7) All rights reserved
 8) All rights reserved
 9) All rights reserved
 10) All rights reserved
 11) All rights reserved
 12) All rights reserved
 13) All rights reserved
 14) All rights reserved
 15) All rights reserved
 16) All rights reserved
 17) All rights reserved
 18) All rights reserved
 19) All rights reserved
 20) All rights reserved
 21) All rights reserved
 22) All rights reserved
 23) All rights reserved
 24) All rights reserved
 25) All rights reserved
 26) All rights reserved
 27) All rights reserved
 28) All rights reserved
 29) All rights reserved
 30) All rights reserved
 31) All rights reserved
 32) All rights reserved
 33) All rights reserved
 34) All rights reserved
 35) All rights reserved
 36) All rights reserved
 37) All rights reserved
 38) All rights reserved
 39) All rights reserved
 40) All rights reserved
 41) All rights reserved
 42) All rights reserved
 43) All rights reserved
 44) All rights reserved
 45) All rights reserved
 46) All rights reserved
 47) All rights reserved
 48) All rights reserved
 49) All rights reserved
 50) All rights reserved
 51) All rights reserved
 52) All rights reserved
 53) All rights reserved
 54) All rights reserved
 55) All rights reserved
 56) All rights reserved
 57) All rights reserved
 58) All rights reserved
 59) All rights reserved
 60) All rights reserved
 61) All rights reserved
 62) All rights reserved
 63) All rights reserved
 64) All rights reserved
 65) All rights reserved
 66) All rights reserved
 67) All rights reserved
 68) All rights reserved
 69) All rights reserved
 70) All rights reserved
 71) All rights reserved
 72) All rights reserved
 73) All rights reserved
 74) All rights reserved
 75) All rights reserved
 76) All rights reserved
 77) All rights reserved
 78) All rights reserved
 79) All rights reserved
 80) All rights reserved
 81) All rights reserved
 82) All rights reserved
 83) All rights reserved
 84) All rights reserved
 85) All rights reserved
 86) All rights reserved
 87) All rights reserved
 88) All rights reserved
 89) All rights reserved
 90) All rights reserved
 91) All rights reserved
 92) All rights reserved
 93) All rights reserved
 94) All rights reserved
 95) All rights reserved
 96) All rights reserved
 97) All rights reserved
 98) All rights reserved
 99) All rights reserved
 100) All rights reserved

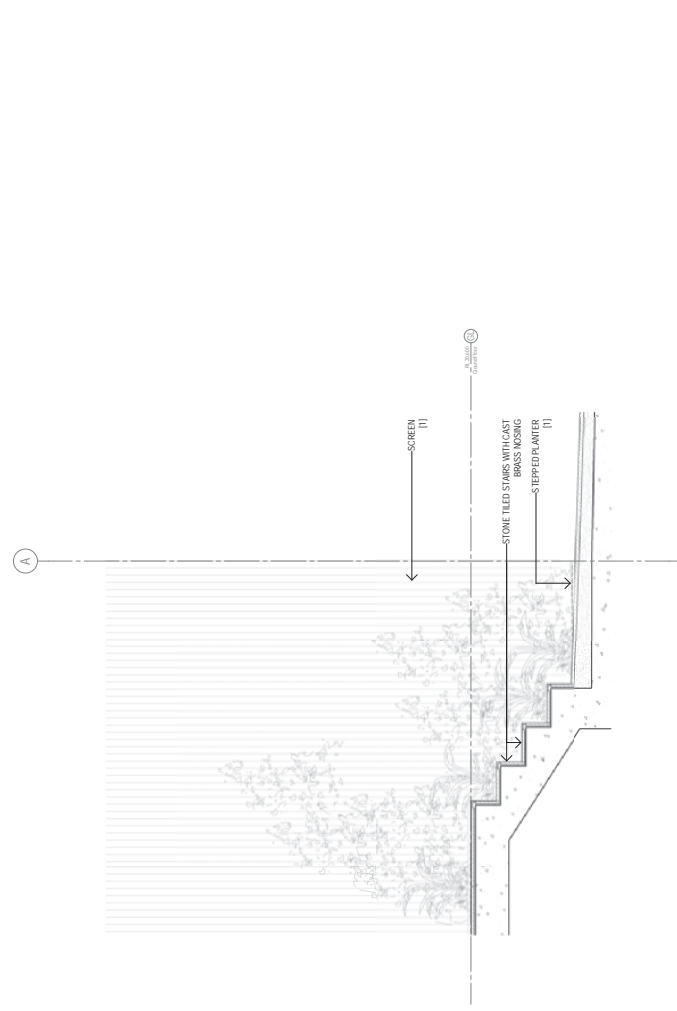


LEGEND
 (1) Copper coloured stainless steel
 (2) Copper coloured treated stainless steel
 (3) Copper coloured stainless steel
 (4) Copper cladding
 (5) Bronze fire glass
 (6) Fire door hardware
 (7) Fire door hardware
 (8) Stone cladding
 (9) Stone cladding

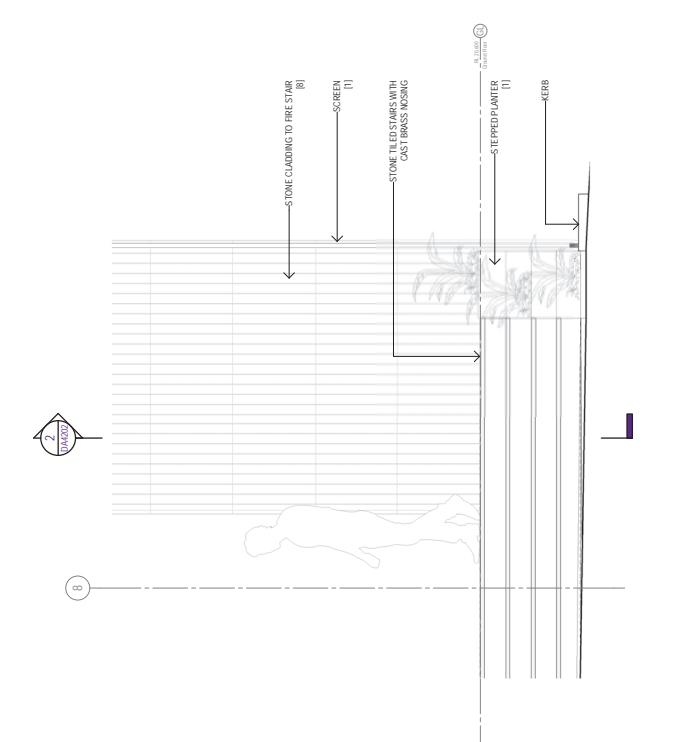
Project
 4-6 Bligh Street
 Client
 Holdmark NSW Pty Ltd

Woods Bagot
 WOODS BAGOT
 121736
 Checked: TD
 Drawn: KD
 Scale: A1
 Date: 1.20
 Status: FOR SSDA

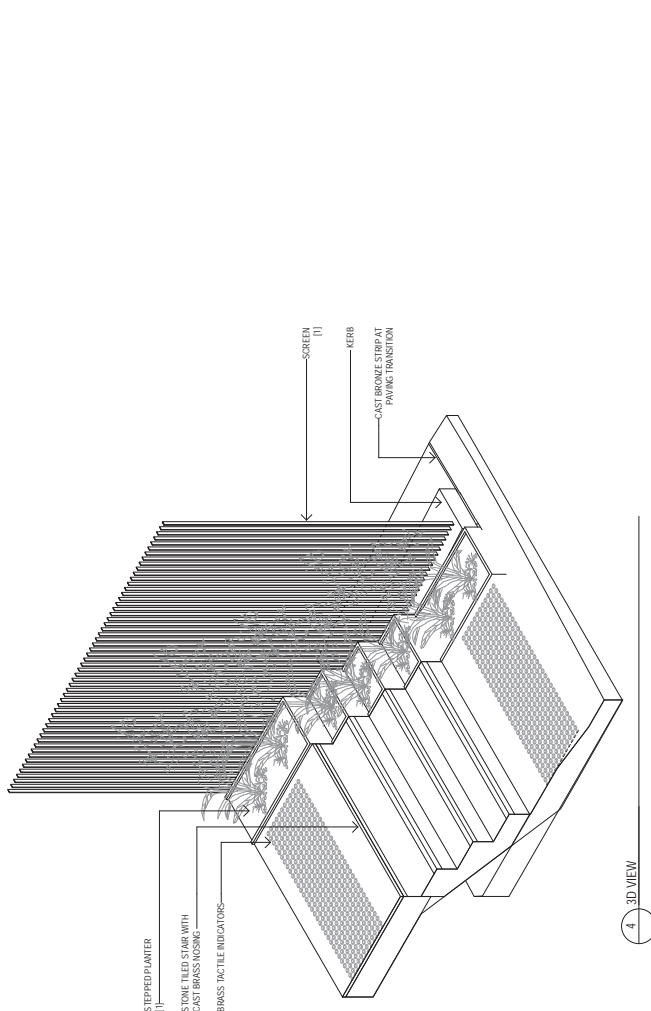
Sheet
 Detail Arrangement
 Ground Facade Interface to Soffitel
 Wentworth
 Revision
 B
 Sheet No
 DA4201
 Scale
 FOR SSDA



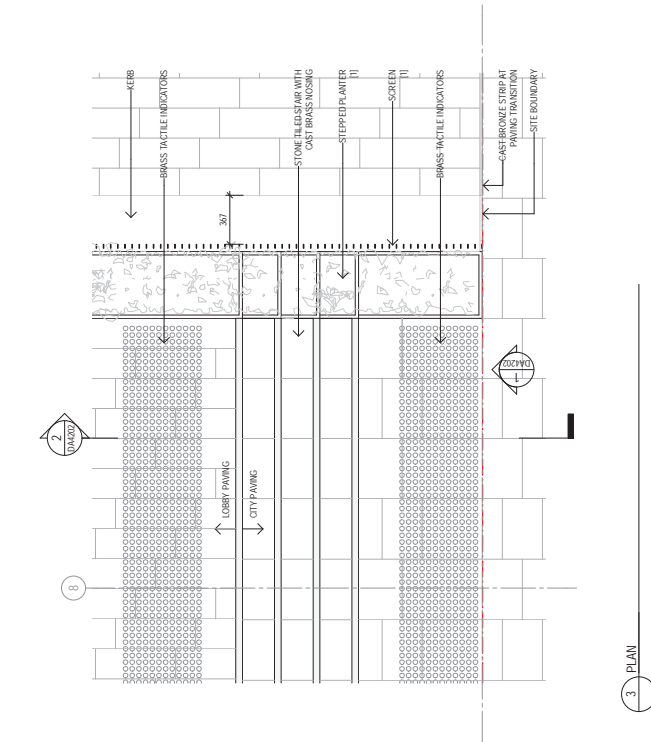
2 SECTION



1 ELEVATION



4 3D VIEW



3 PLAN

Sheet
Detail Arrangement
Ground Steps Details

W-B
WOODS BAGOT

Project
4-6 Bigh Street
Client
Holdmark NSW Pty Ltd

Drawn by
121736
Checked
TD

Scale
1:20

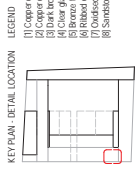
FOR SSDA

Revised
12/12/23
13/12/23

Revised
14/02/2023 12:30 PM

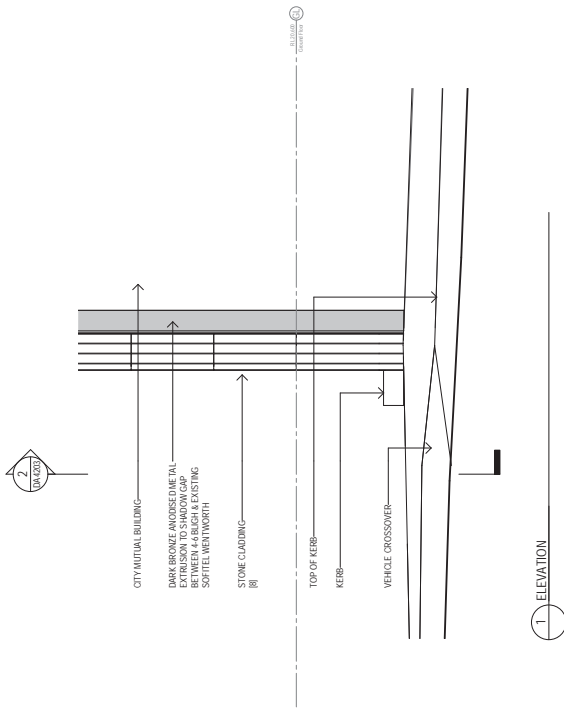
Revised
14/02/2023 12:30 PM

Revised
14/02/2023 12:30 PM

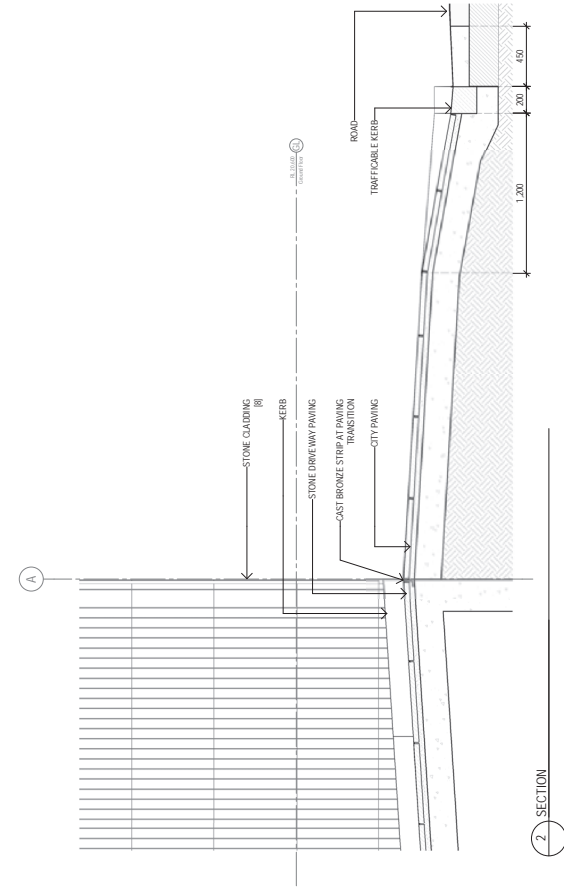


Notes
Original © Woods Bagot 2018
All rights reserved
No material may be reproduced without prior permission
Consult your local council for information on site before commencing
work or preparing any drawings
Do not cut or awps

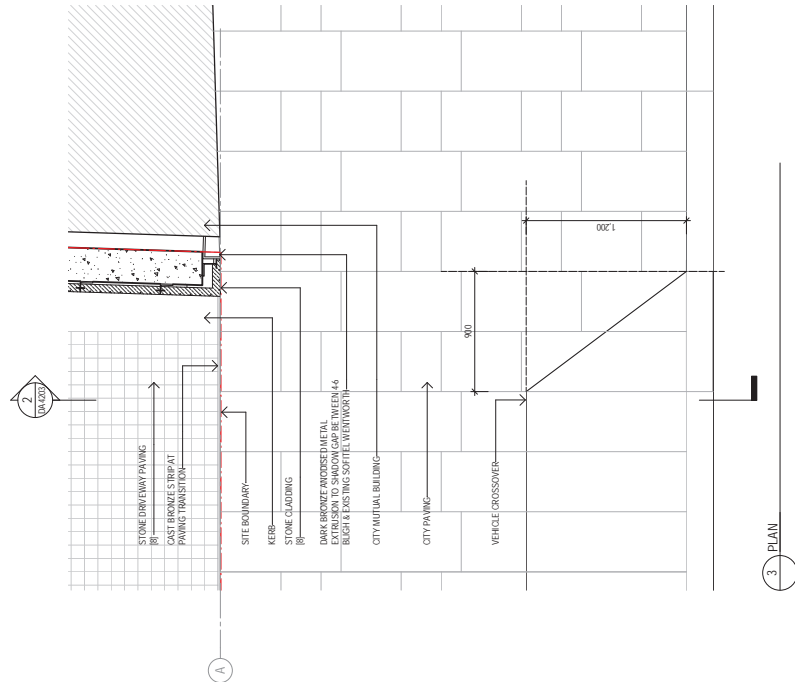
LEGEND
[1] Copper coloured stainless steel
[2] Copper coloured textured stainless steel
[3] Copper coloured stainless steel
[4] Cast brass
[5] Bronze tint glass
[6] Polished dark bronze anodised aluminium
[7] Polished dark bronze anodised aluminium
[8] Stone cladding



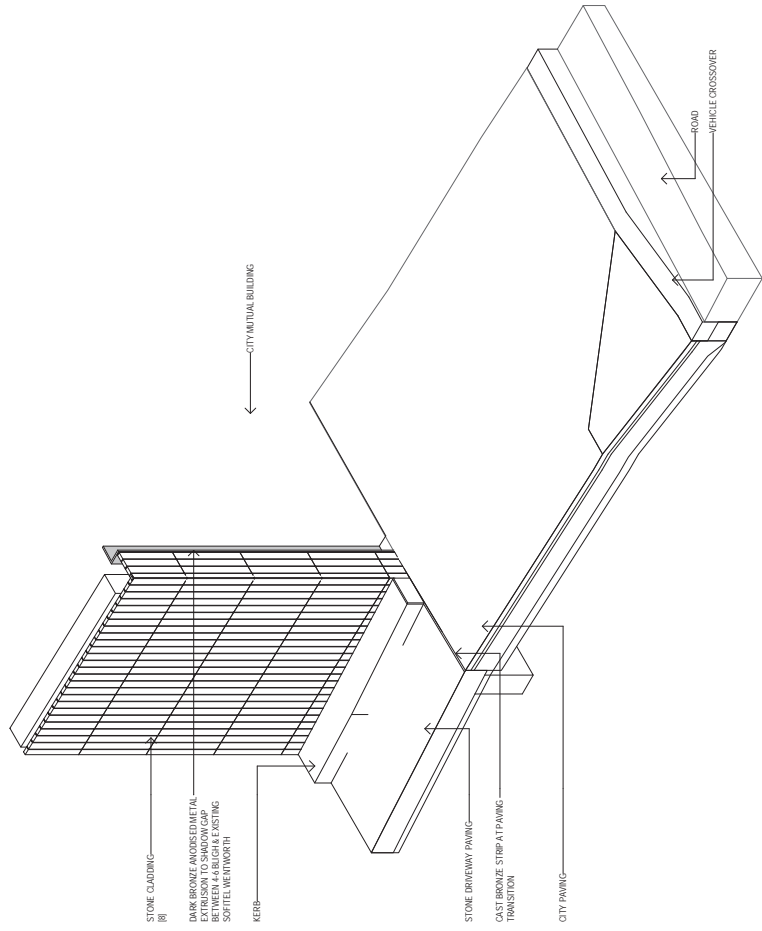
1 ELEVATION



2 SECTION

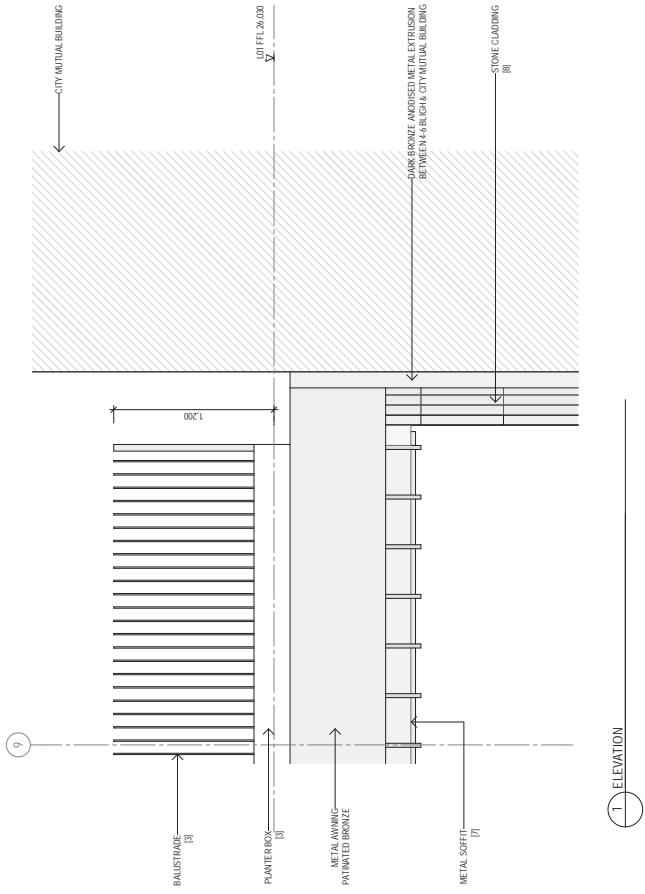


3 PLAN

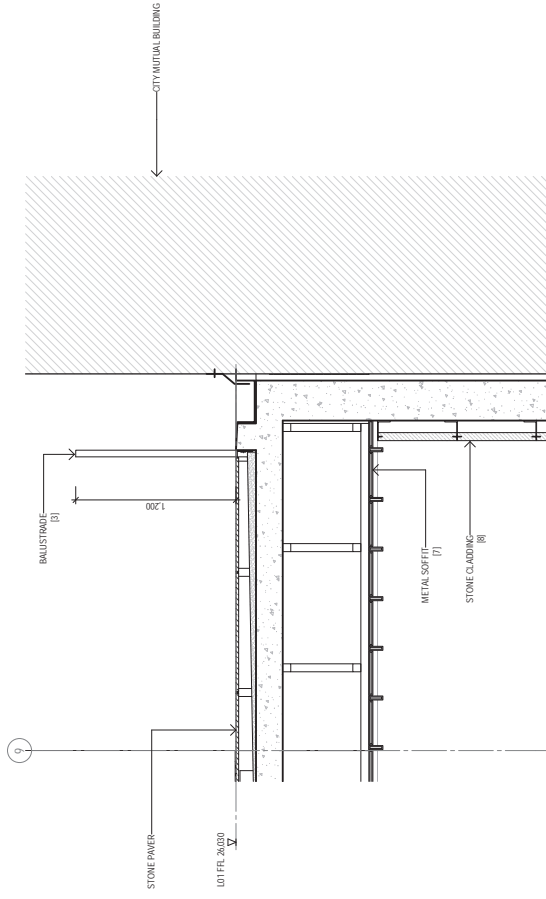


<p>Revised 14/07/2023 12:30 PM - A:\bldg\Doc\107276_44-889-Shop\107276_44-889-Shop_S-BUILDING_GROUND.PLT</p>	<p>Issue Date 19/12/22 14/07/23</p> <p>Originator SSDA/SP/MS SSDA/MS/MS</p> <p>Author SSDA/MS/MS</p> <p>Check TD</p>	<p>Project 4-6 Bligh Street</p> <p>Client Holdmark NSW Pty Ltd</p>	<p>Sheet Detail Arrangement Ground Facade Interface to City Mutual</p> <p>Sheet No DA4203</p> <p>Scale 1:20</p>	<p>W-B WOODS BAGOT</p> <p>Project No 121736</p> <p>Check TD</p> <p>Scale 1:20</p>	<p>Sheet No B</p> <p>Scale 1:20</p>
--	--	--	---	---	---

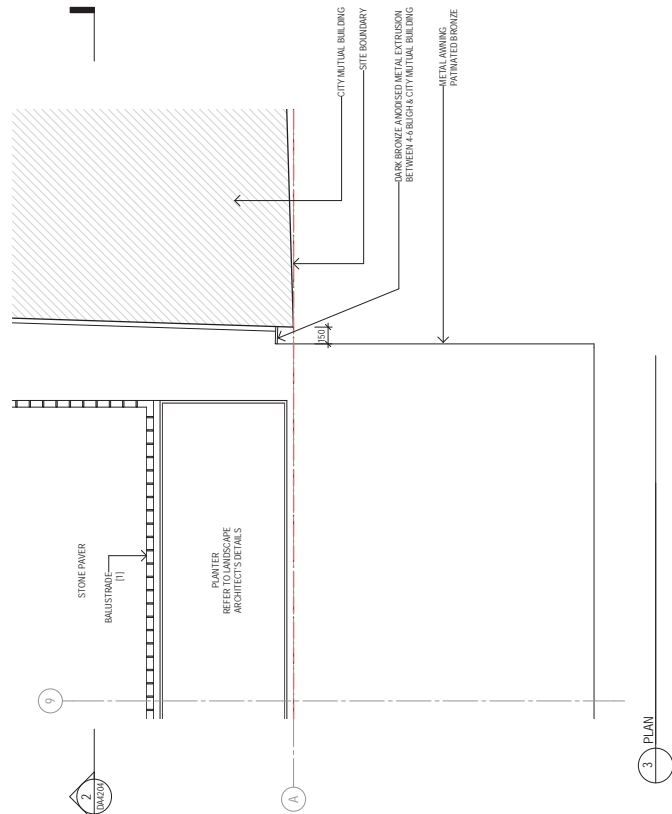
<p>Notes</p> <p>1) Copper coloured stainless steel</p> <p>2) Copper coloured treated stainless steel</p> <p>3) Copper coloured stainless steel</p> <p>4) Copper glass</p> <p>5) Bronze tint glass</p> <p>6) Powder coat bronze anodised aluminium</p> <p>7) Dark bronze anodised aluminium</p> <p>8) Stone cladding</p>	<p>KEY PLAN - DETAIL LOCATION</p>
---	-----------------------------------



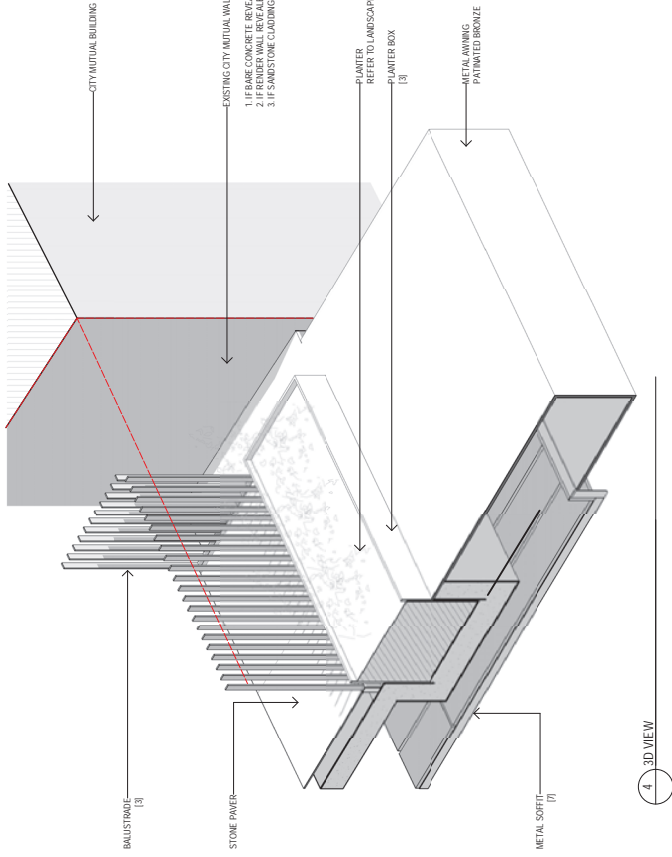
1 ELEVATION



2 SECTION

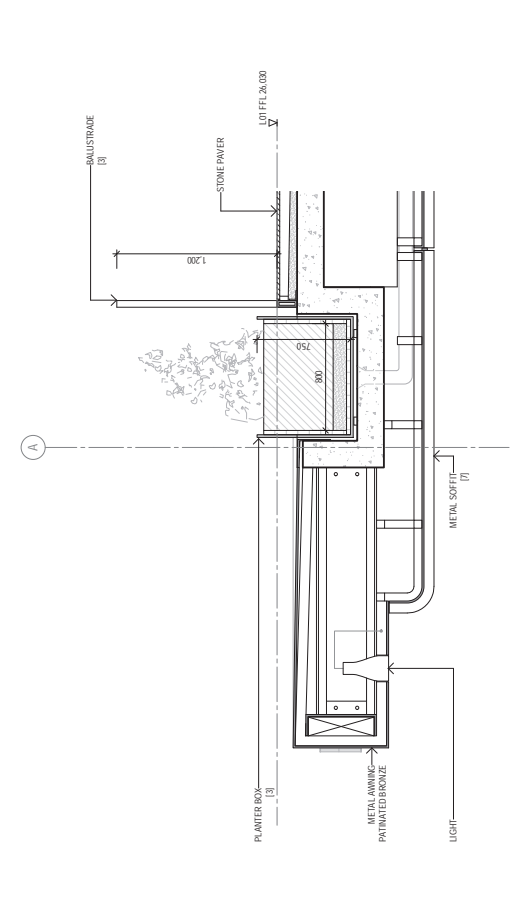


3 PLAN

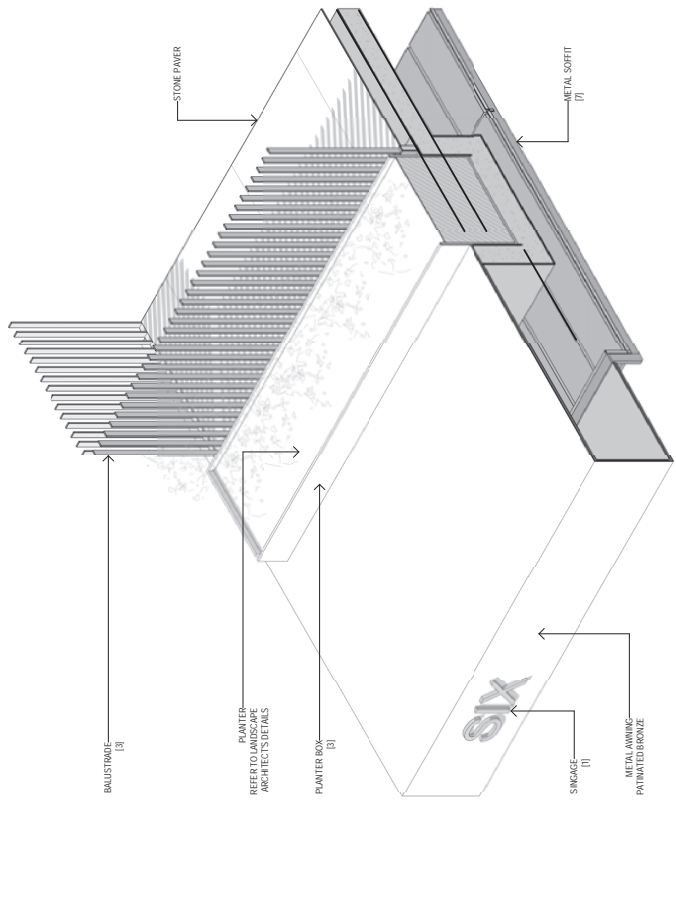


4 3D VIEW

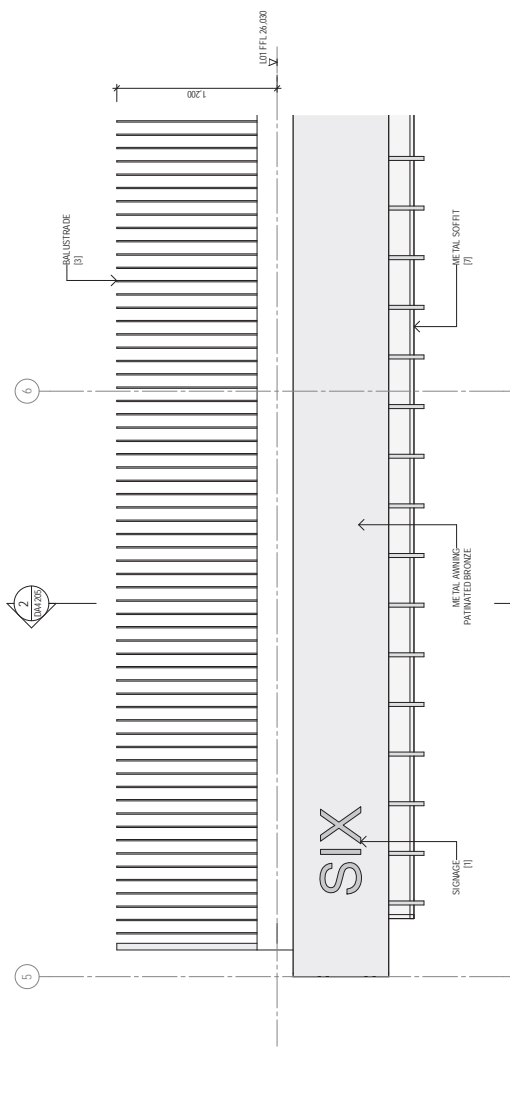
<p>Sheet: Detail Arrangement Level 01 Facade Interface to City Mutual</p> <p>Project: 4-6 Bligh Street</p> <p>Client: Holdmark NSW Pty Ltd</p>	<p>Woods Bagot</p> <p>121736</p> <p>DA4204</p> <p>FOR SSDA</p>	<p>Scale: 1:20</p> <p>Revision: B</p>
<p>Issue: Original © Woods Bagot 2018</p> <p>Date: 10/12/21</p> <p>Author: SSDA/SP/MS</p> <p>Checker: SSDA/MS/MS</p> <p>Designer: SSDA/MS/MS</p> <p>Contractor: Refer to landscape architect's details</p> <p>Do not scale drawings</p>	<p>KEY PLAN - DETAIL LOCATION</p>	<p>LEGEND</p> <p>[1] Copper coloured stainless steel</p> <p>[2] Copper coloured treated stainless steel</p> <p>[3] Copper coloured stainless steel</p> <p>[4] Clear glass</p> <p>[5] Bronze tint glass</p> <p>[6] Polished dark bronze anodised aluminium</p> <p>[7] Dark bronze anodised stainless steel</p> <p>[8] Sandstone cladding</p>



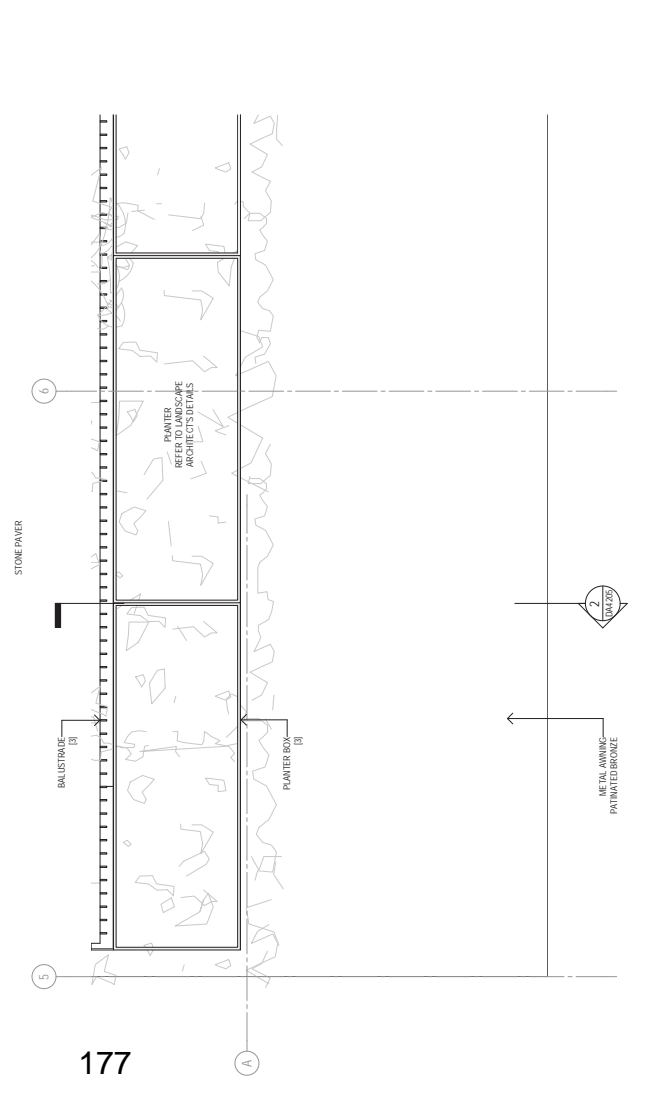
2 SECTION



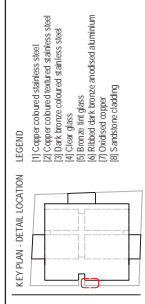
4 3D VIEW



1 ELEVATION



3 PLAN



Notes

1) Copper coloured stainless steel

2) Copper coloured treated stainless steel

3) Copper coloured stainless steel

4) Clear glass

5) Bronze tint glass

6) Anodised aluminium

7) Dark bronze anodised aluminium

8) Synthetic cladding

LEGEND

KEY PLAN - DETAIL LOCATION

Notes

1) Original © Woods Bagot 2018

2) All rights reserved

3) No material may be reproduced without prior permission

4) Contractor must verify all dimensions on site before commencing work

5) Do not cut or saw

6) Do not cut or saw

7) Do not cut or saw

8) Do not cut or saw

9) Do not cut or saw

10) Do not cut or saw

11) Do not cut or saw

12) Do not cut or saw

13) Do not cut or saw

14) Do not cut or saw

15) Do not cut or saw

16) Do not cut or saw

17) Do not cut or saw

18) Do not cut or saw

19) Do not cut or saw

20) Do not cut or saw

21) Do not cut or saw

22) Do not cut or saw

23) Do not cut or saw

24) Do not cut or saw

25) Do not cut or saw

26) Do not cut or saw

27) Do not cut or saw

28) Do not cut or saw

29) Do not cut or saw

30) Do not cut or saw

31) Do not cut or saw

32) Do not cut or saw

33) Do not cut or saw

34) Do not cut or saw

35) Do not cut or saw

36) Do not cut or saw

37) Do not cut or saw

38) Do not cut or saw

39) Do not cut or saw

40) Do not cut or saw

41) Do not cut or saw

42) Do not cut or saw

43) Do not cut or saw

44) Do not cut or saw

45) Do not cut or saw

46) Do not cut or saw

47) Do not cut or saw

48) Do not cut or saw

49) Do not cut or saw

50) Do not cut or saw

51) Do not cut or saw

52) Do not cut or saw

53) Do not cut or saw

54) Do not cut or saw

55) Do not cut or saw

56) Do not cut or saw

57) Do not cut or saw

58) Do not cut or saw

59) Do not cut or saw

60) Do not cut or saw

61) Do not cut or saw

62) Do not cut or saw

63) Do not cut or saw

64) Do not cut or saw

65) Do not cut or saw

66) Do not cut or saw

67) Do not cut or saw

68) Do not cut or saw

69) Do not cut or saw

70) Do not cut or saw

71) Do not cut or saw

72) Do not cut or saw

73) Do not cut or saw

74) Do not cut or saw

75) Do not cut or saw

76) Do not cut or saw

77) Do not cut or saw

78) Do not cut or saw

79) Do not cut or saw

80) Do not cut or saw

81) Do not cut or saw

82) Do not cut or saw

83) Do not cut or saw

84) Do not cut or saw

85) Do not cut or saw

86) Do not cut or saw

87) Do not cut or saw

88) Do not cut or saw

89) Do not cut or saw

90) Do not cut or saw

91) Do not cut or saw

92) Do not cut or saw

93) Do not cut or saw

94) Do not cut or saw

95) Do not cut or saw

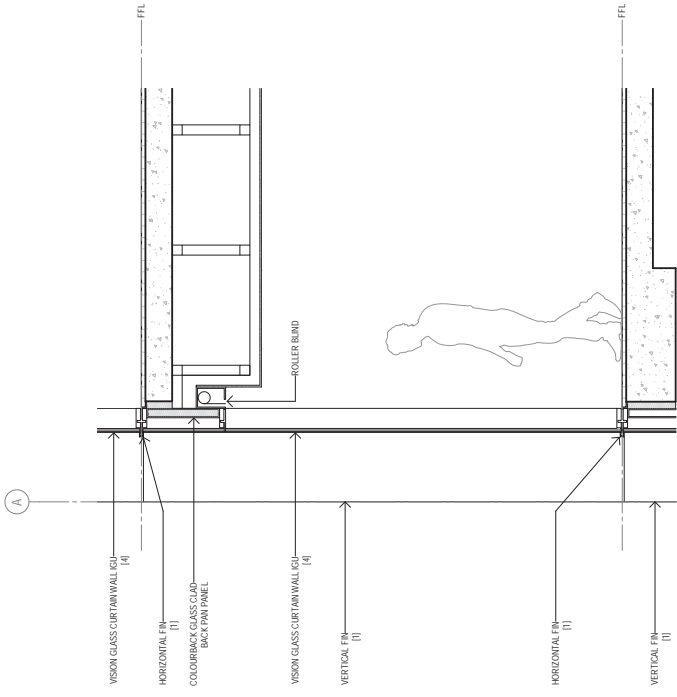
96) Do not cut or saw

97) Do not cut or saw

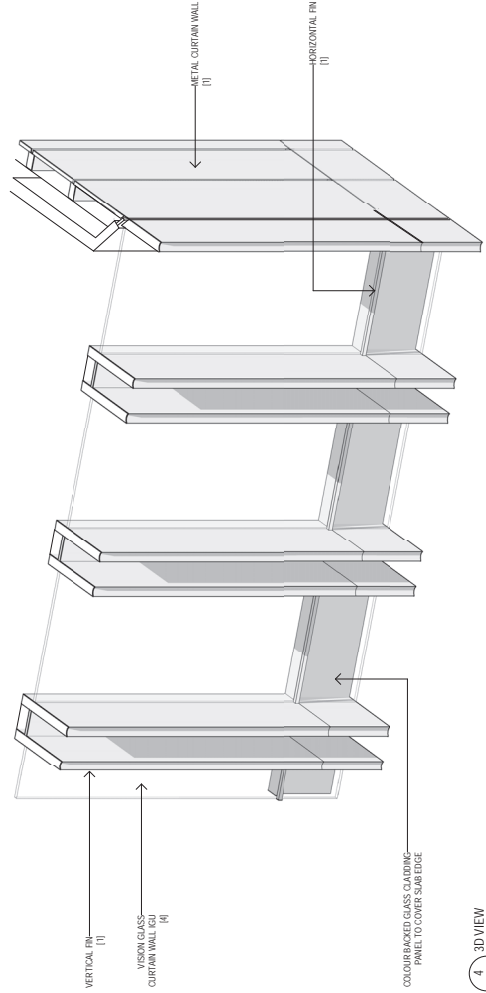
98) Do not cut or saw

99) Do not cut or saw

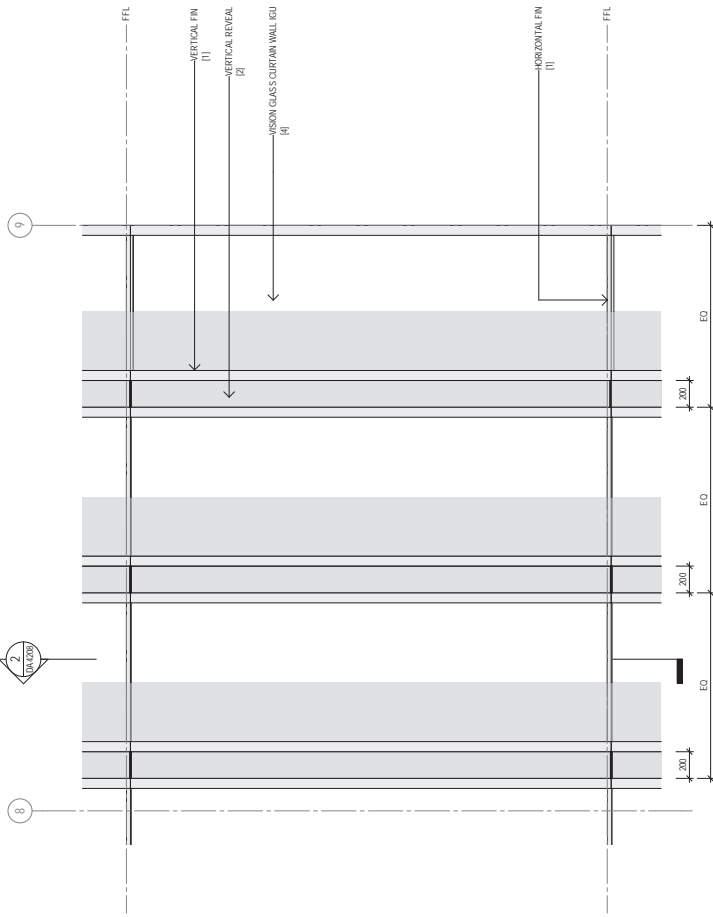
100) Do not cut or saw



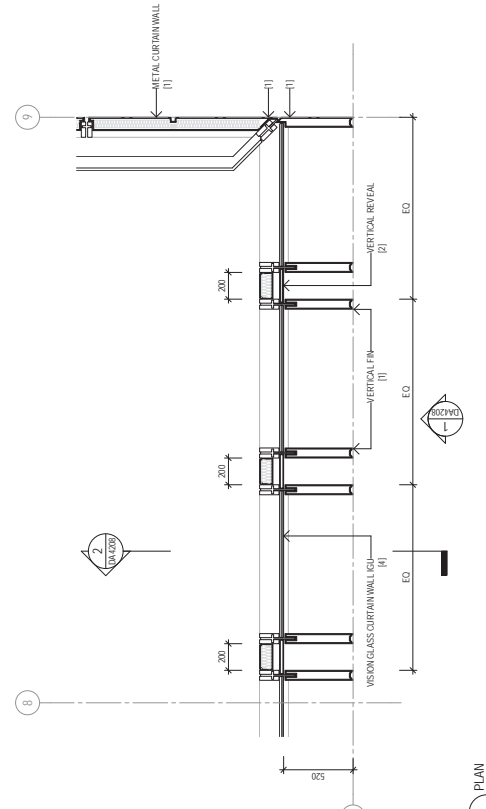
2 SECTION



4 3D VIEW



1 ELEVATION



3 PLAN

Sheet
Detail Arrangement
Typical Commercial Façade

Project
4-6 Bligh Street

Client
Holdmark NSW Pty Ltd

Drawn
ZD

Checked
TD

Scale
A1

Sheet No
DA428

Scale
1:20

FOR SSDA

W-B
WOODS BAGOT

Project No
121736

Check
TD

Notes

1) Copper coloured stainless steel

2) Copper coloured treated stainless steel

3) Copper coloured stainless steel

4) Copper glass

5) Bronze tint glass

6) Clear tint glass

7) Clear tint glass

8) 5 year warranty

9) 5 year warranty



Notes

Copyright © Woods Bagot 2018

All rights reserved. No part of this publication may be reproduced without prior permission.

Consult your architect for any information on site before commencing work on preparing shop drawings.

Do not use as a template.

Revised
Date
19/12/22

SSDA
SSDA/MS/Response

14/07/23

Revised
Date
19/12/22

SSDA
SSDA/MS/Response

14/07/23

Revised
Date
19/12/22

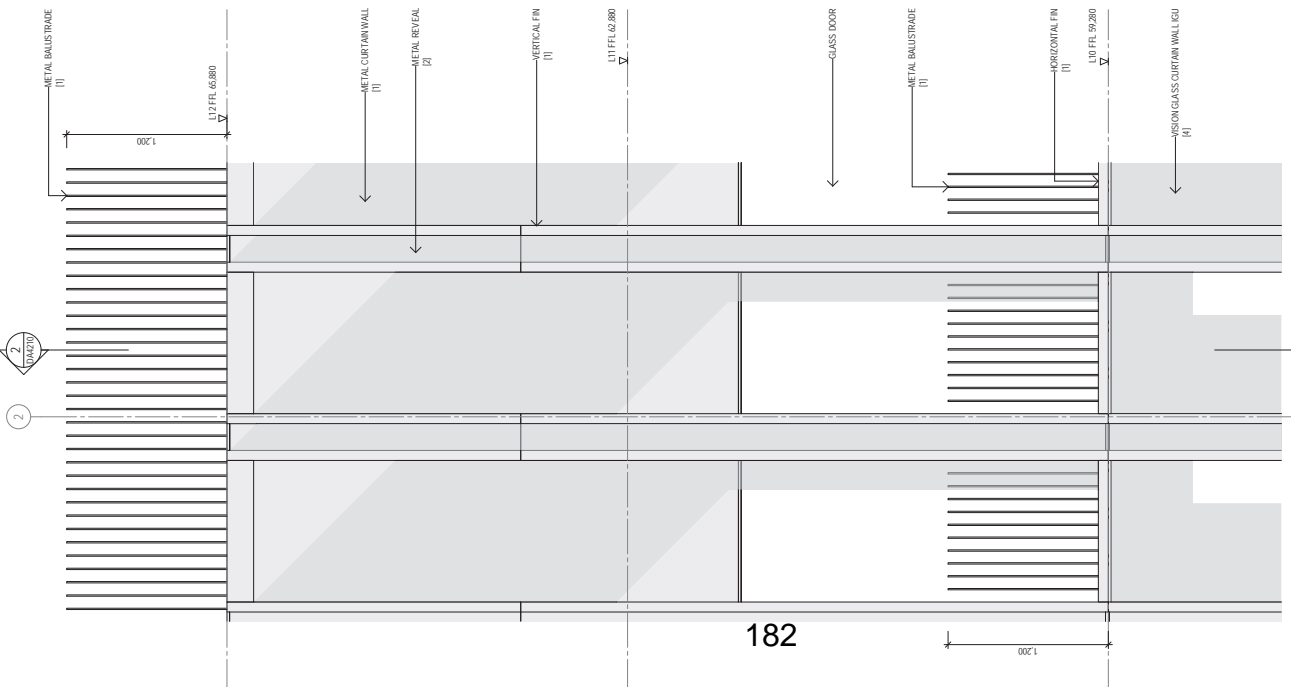
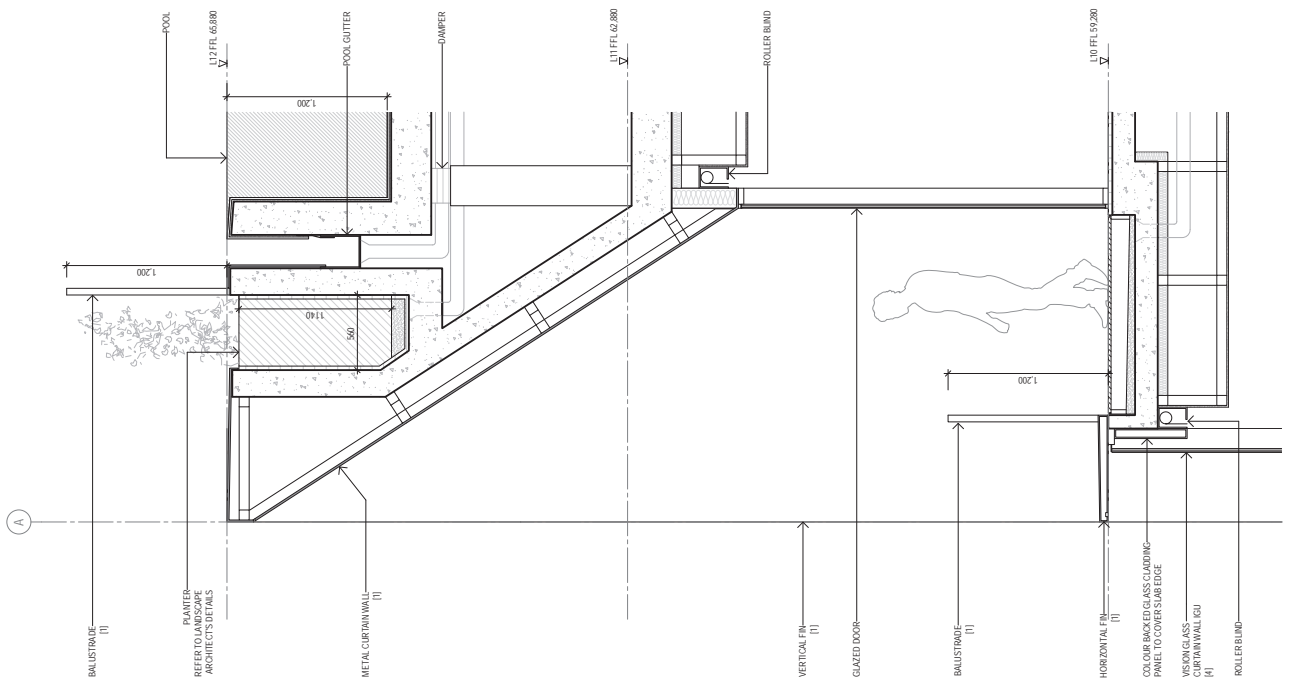
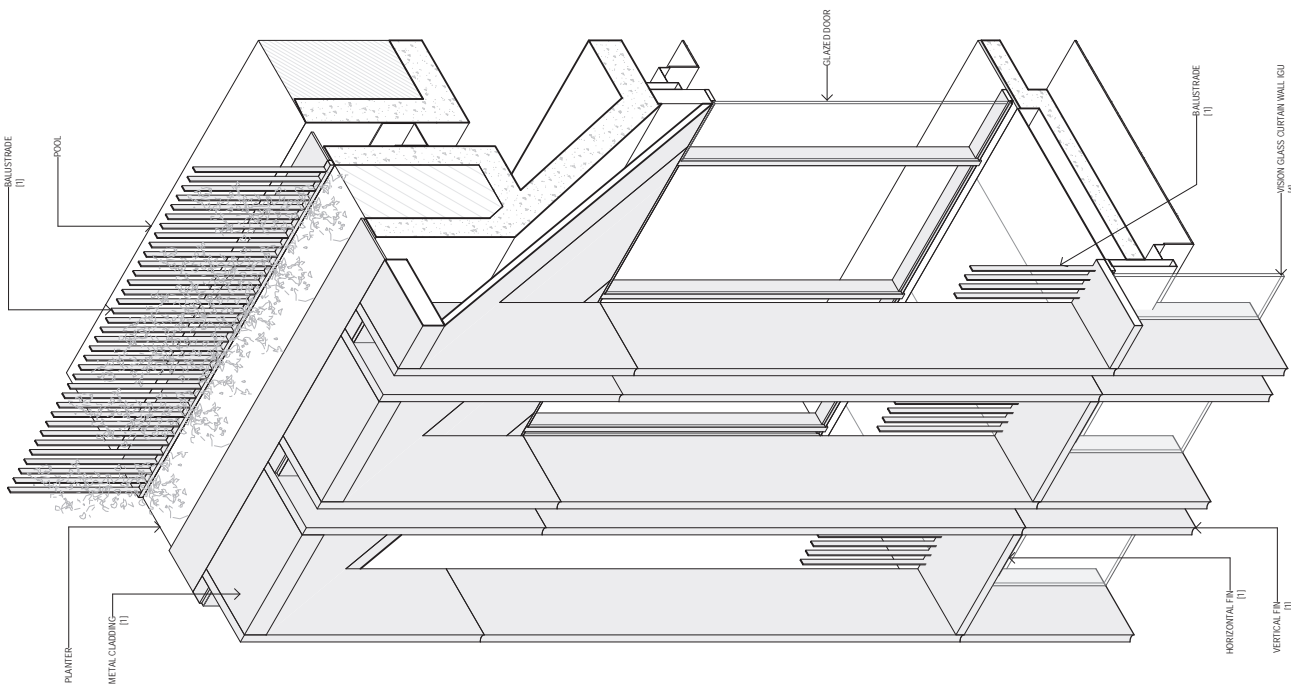
SSDA
SSDA/MS/Response

14/07/23

Revised
Date
19/12/22

SSDA
SSDA/MS/Response

14/07/23



LEGEND
 (1) Copper coloured stainless steel
 (2) Copper coloured textured stainless steel
 (3) Copper coloured stainless steel
 (4) Copper glass
 (5) Bronze tint glass
 (6) Clear glass
 (7) Clear glass
 (8) Clear glass
 (9) Clear glass
 (10) Clear glass

KEY PLAN - DETAIL LOCATION

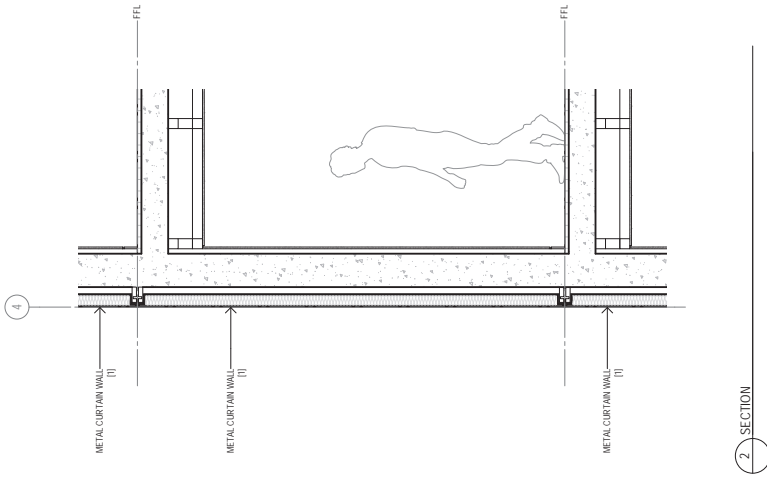
Notes
 Original © Woods Bagot 2016
 All rights reserved. No part of this publication may be reproduced without prior permission.
 Construction materials and dimensions on this drawing are subject to change without notice.
 Do not scale drawings.

Drawn
KO
Scale
A1

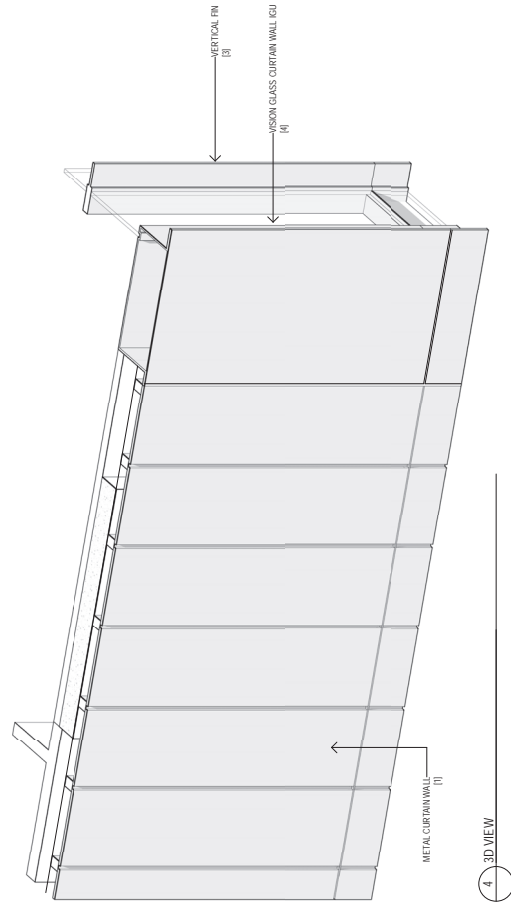
Checked
TD
Scale
A1

For SSSA
FOR SSSA

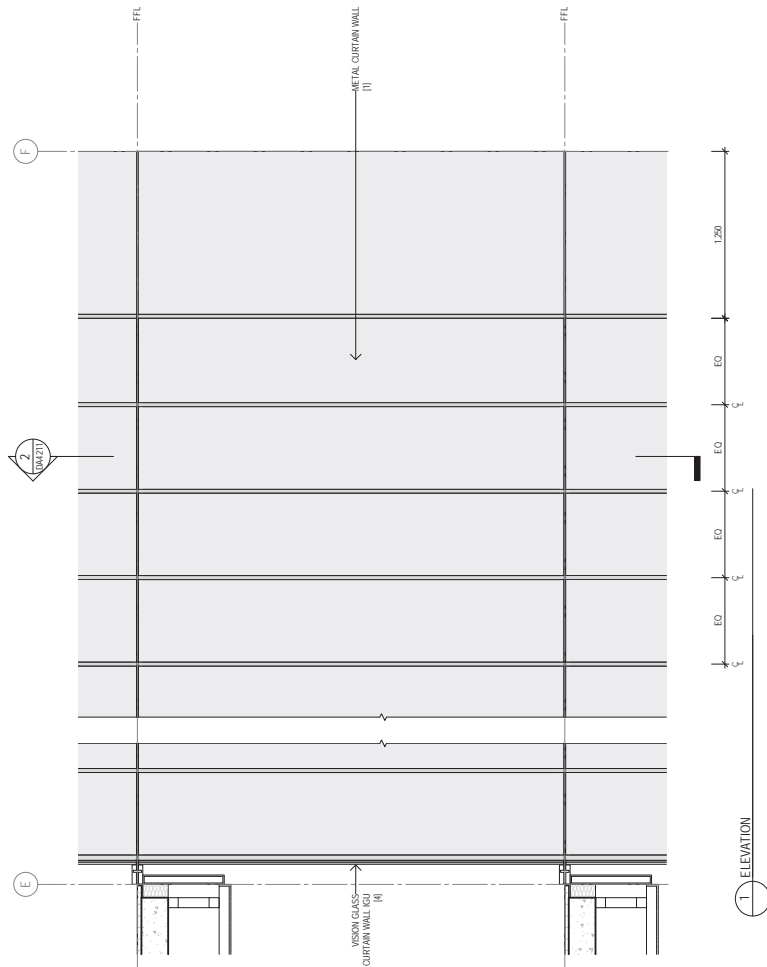
Revision
KO
Scale
A1



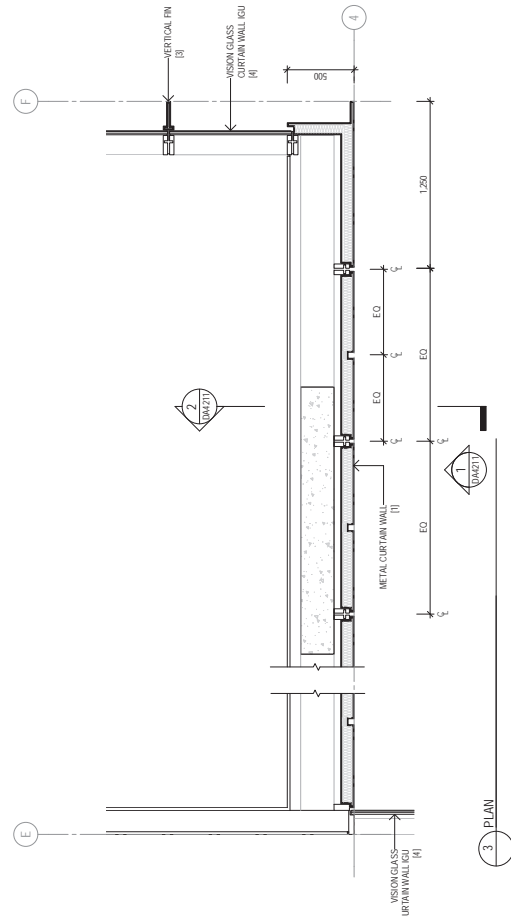
2 SECTION



4 3D VIEW



1 ELEVATION



3 PLAN

Sheet
Detail Arrangement
Typical Hotel Façade Type 1A

W-B™
WOODS BAGOT
Project No: 121736
Check: TD
Design: KD
Scale: A1
1:20
Status: FOR SSDA

Project
4-6 Bligh Street
Client
Holdmark NSW Pty Ltd

Drawn: [Blank]
Checked: [Blank]
Scale: [Blank]

Revised: [Blank]
Checked: [Blank]
Scale: [Blank]

Revised: [Blank]
Checked: [Blank]
Scale: [Blank]

Revised: [Blank]
Checked: [Blank]
Scale: [Blank]

Revised: [Blank]
Checked: [Blank]
Scale: [Blank]

Revised: [Blank]
Checked: [Blank]
Scale: [Blank]

Revised: [Blank]
Checked: [Blank]
Scale: [Blank]

LEGEND

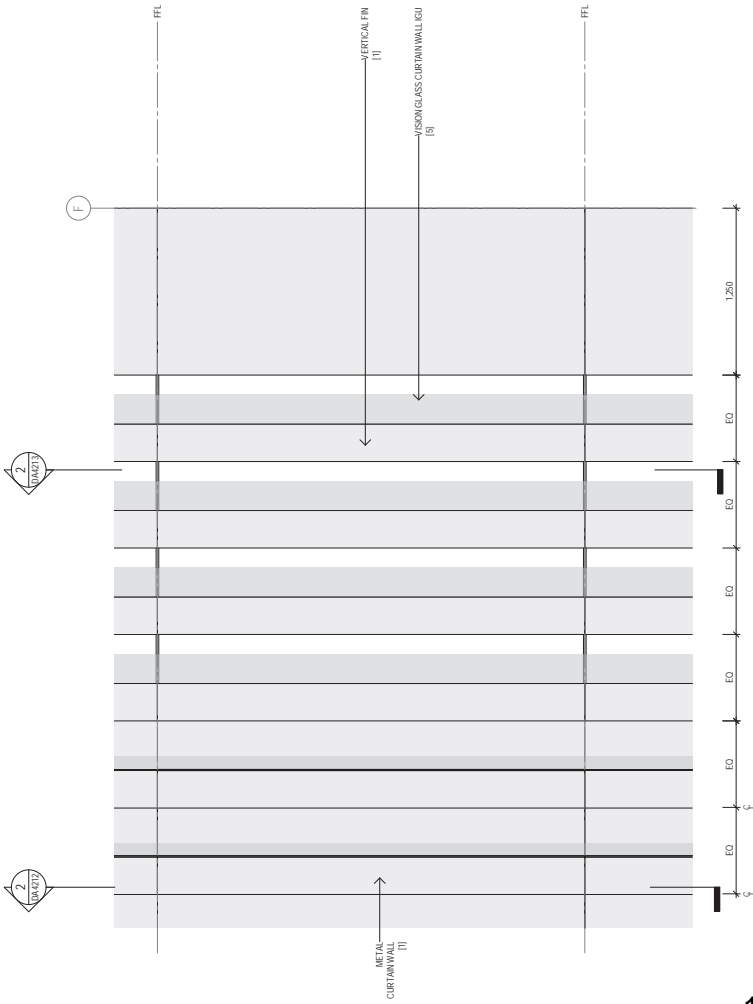
- (1) Copper coloured stainless steel
- (2) Copper colour of treated stainless steel
- (3) Copper colour of treated stainless steel
- (4) Clear glass
- (5) Bronze tint glass
- (6) Ribbed dark bronze anodised aluminium

KEY PLAN - DETAIL LOCATION

Notes

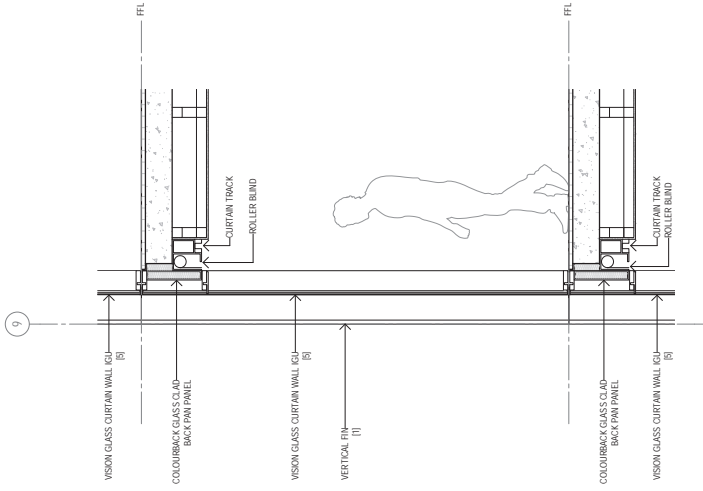
- 1) Original © Woods Bagot 2018
- 2) All rights reserved
- 3) No material may be reproduced without prior permission
- 4) Contractor must verify all dimensions on site before commencing work
- 5) Do not use any other materials

Revised: [Blank]
Checked: [Blank]
Scale: [Blank]

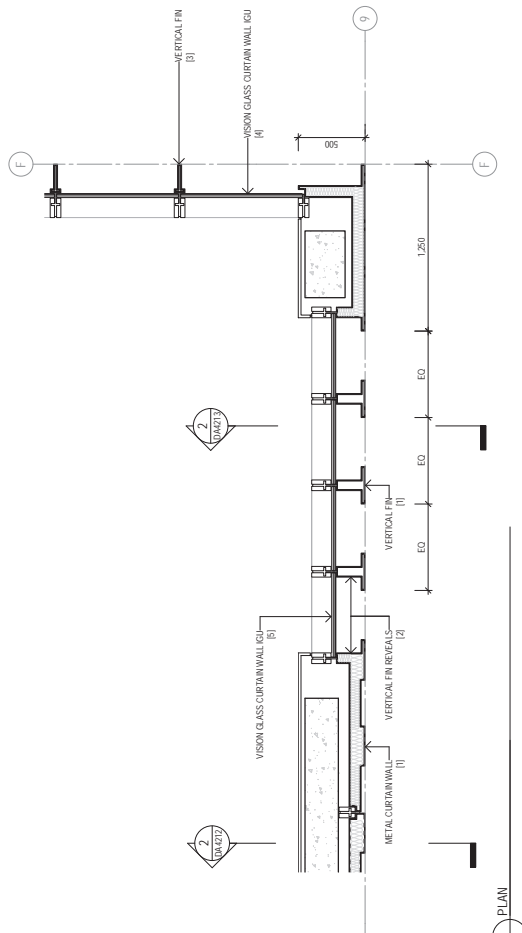


1 ELEVATION

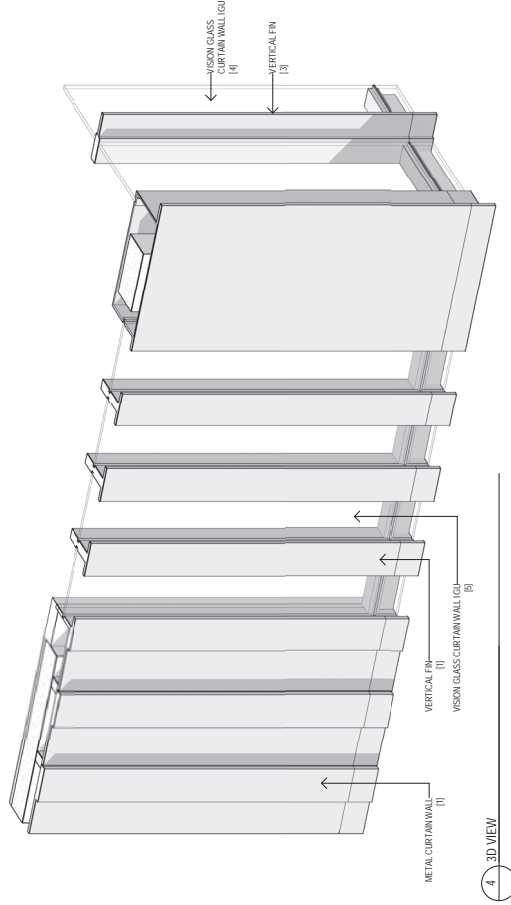
185



2 SECTION



3 PLAN



4 3D VIEW

Revised	18/12/23	Original: Woods Bagot 2018
Drawn	18/12/23	For materiality reproduction without prior permission
Checked	18/12/23	Consultant may vary/dimensions on site before construction
Approved		Do not scale drawings

KEY PLAN - DETAIL LOCATION



- LEGEND
- (1) Copper colored stainless steel
 - (2) Copper colored coated stainless steel
 - (3) Copper colored stainless steel
 - (4) Dark grey
 - (5) Bronze tint glass
 - (6) Ribbed dark bronze anodized aluminium

Project
4-6 Bligh Street

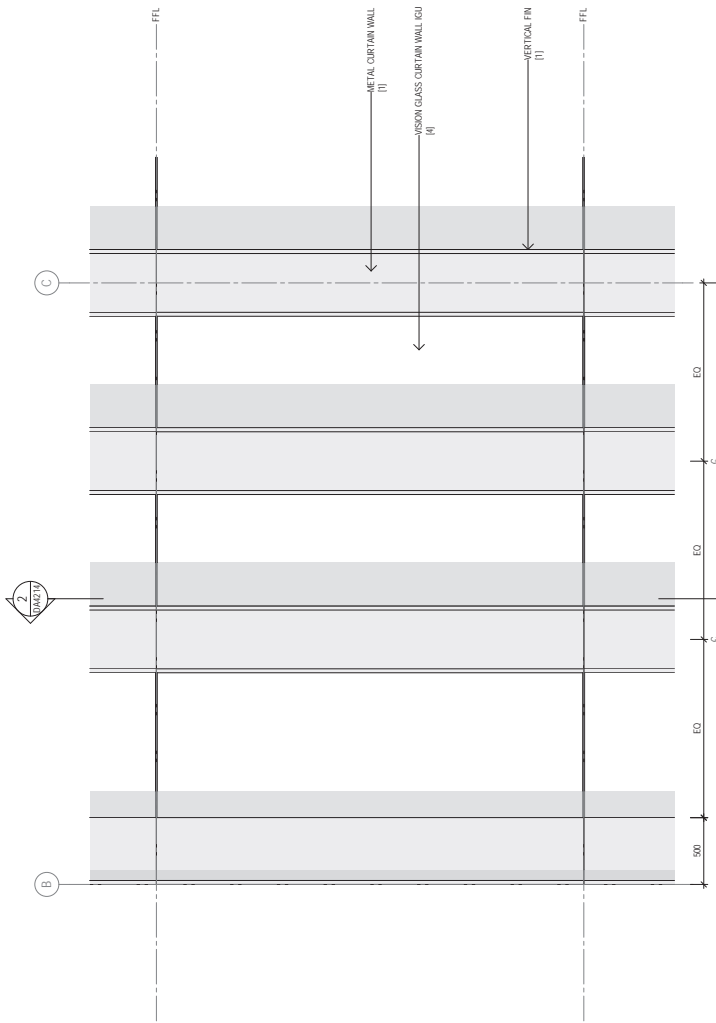
Client
Holdmark NSW Pty Ltd

Year
2024

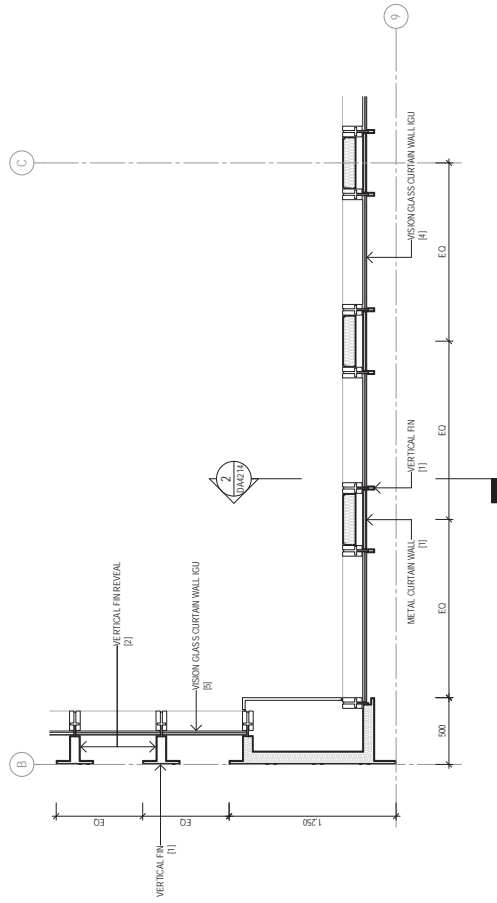
Woods Bagot
121736
Checklist
TD

Sheet
Detail Arrangement
Typical Hotel Façade Type 2A

Checked by
DA4213
Scale
A1 1:20
FOR SSDA

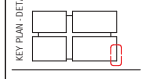


1 ELEVATION

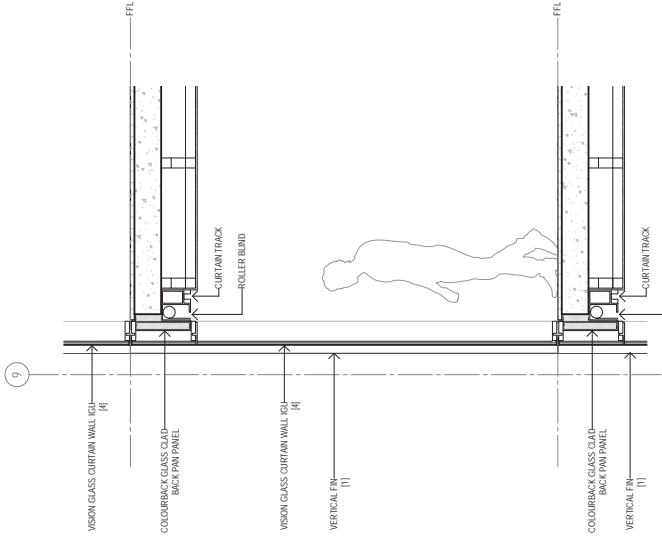


3 PLAN

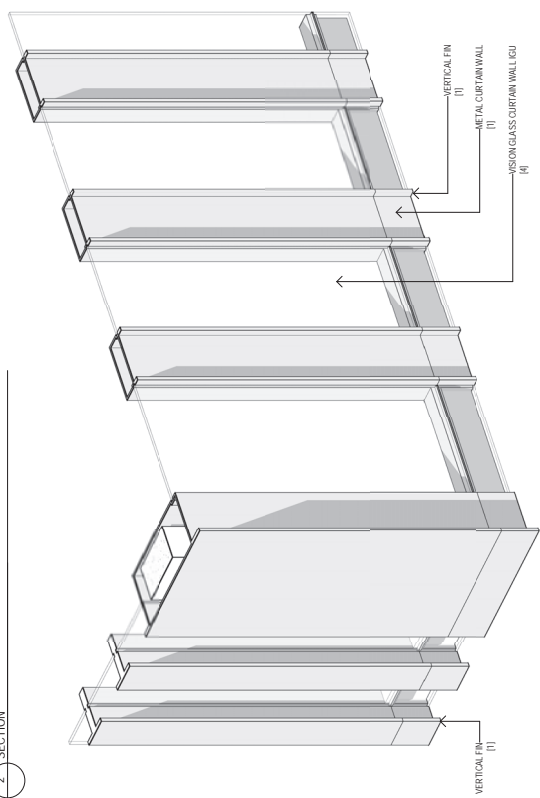
Notes
 1) Original © Woods Bagot 2018
 2) All rights reserved
 3) No part of this document may be reproduced without prior permission
 4) All dimensions are in millimeters unless otherwise stated
 5) Do not scale drawings
 6) Do not use arrows



LEGEND
 (1) Upper colored business steel
 (2) Upper colored of coated business steel
 (3) Lower colored of coated business steel
 (4) Outer glass
 (5) Bronze tint glass
 (6) Ribbed dark bronze anodized aluminium



2 SECTION

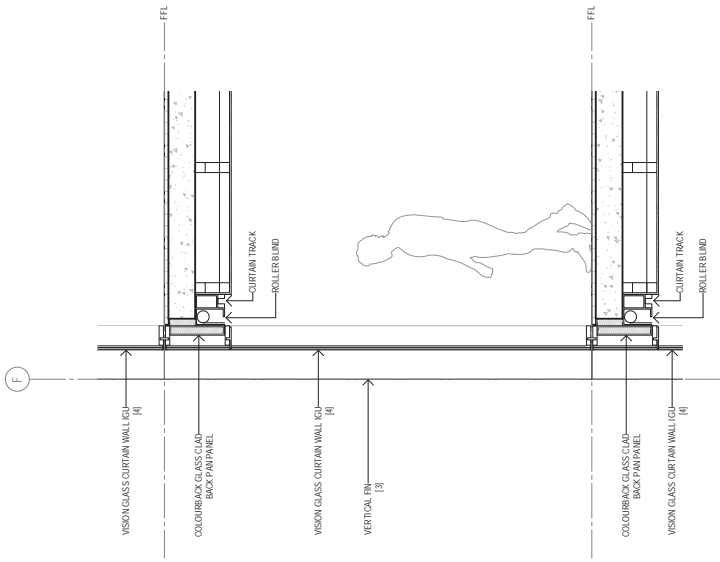


4 3D VIEW

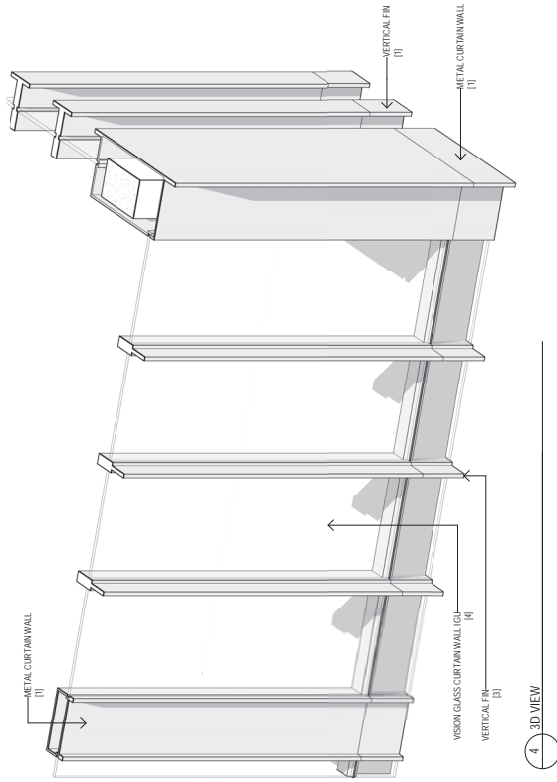
Project
 4-6 Blyth Street
 Client
 Holdmark NSW Pty Ltd

Woods Bagot
 W-B™
 121736
 Checklist
 TD

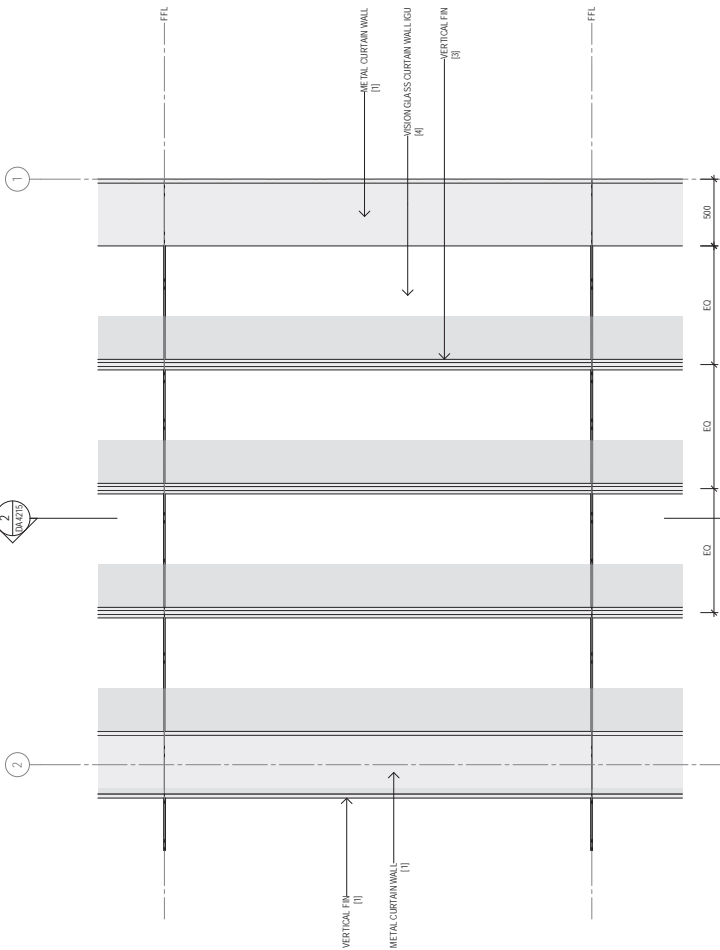
Sheet
 Detail Arrangement
 Typical Hotel Façade Type 2B
 Revision
 B
 Scale
 1:20
 Date
 11/08/2020



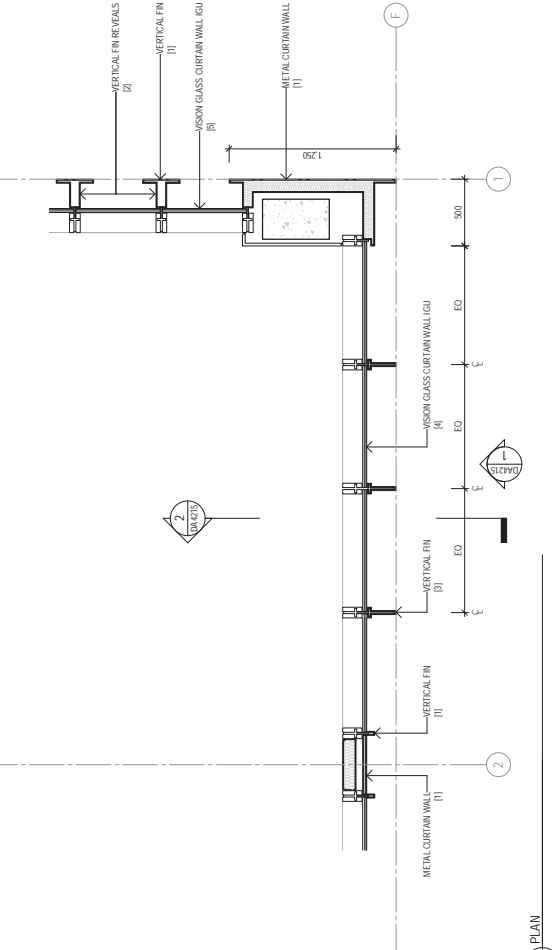
2. ELEVATION



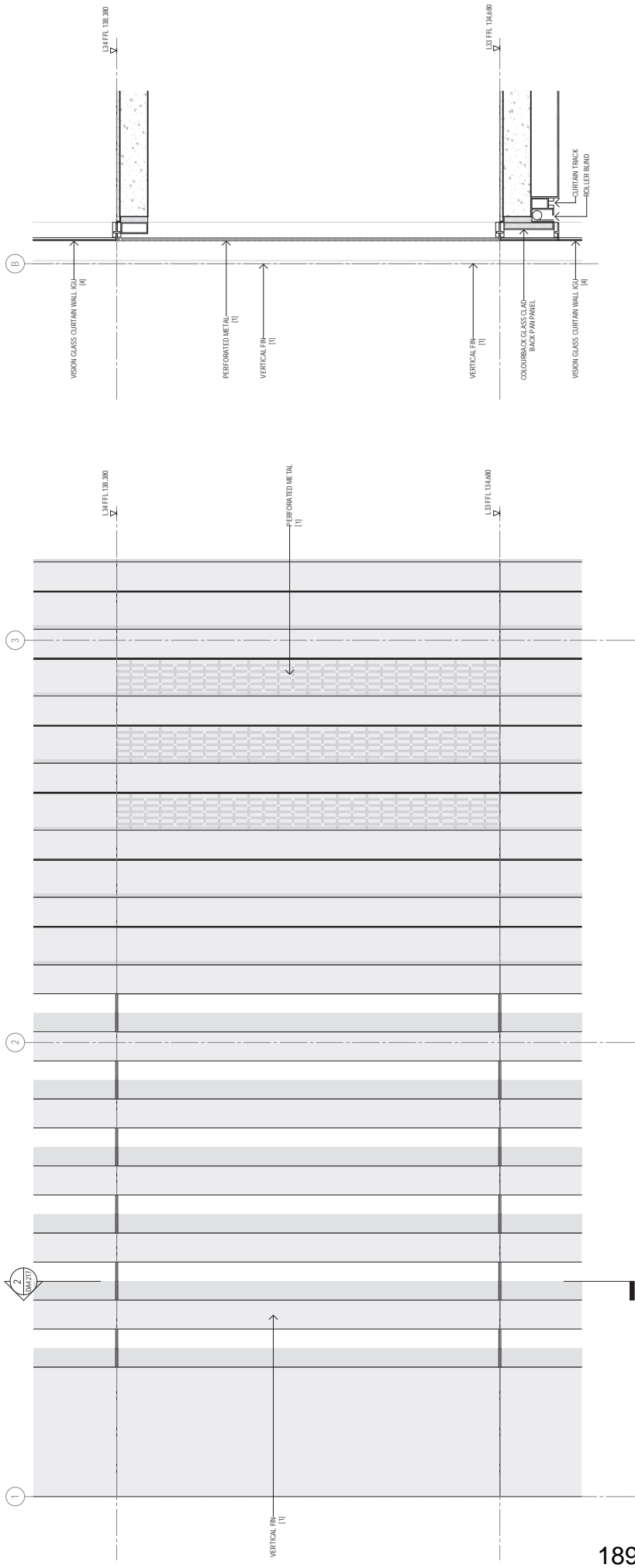
4. 3D VIEW



1. PLAN

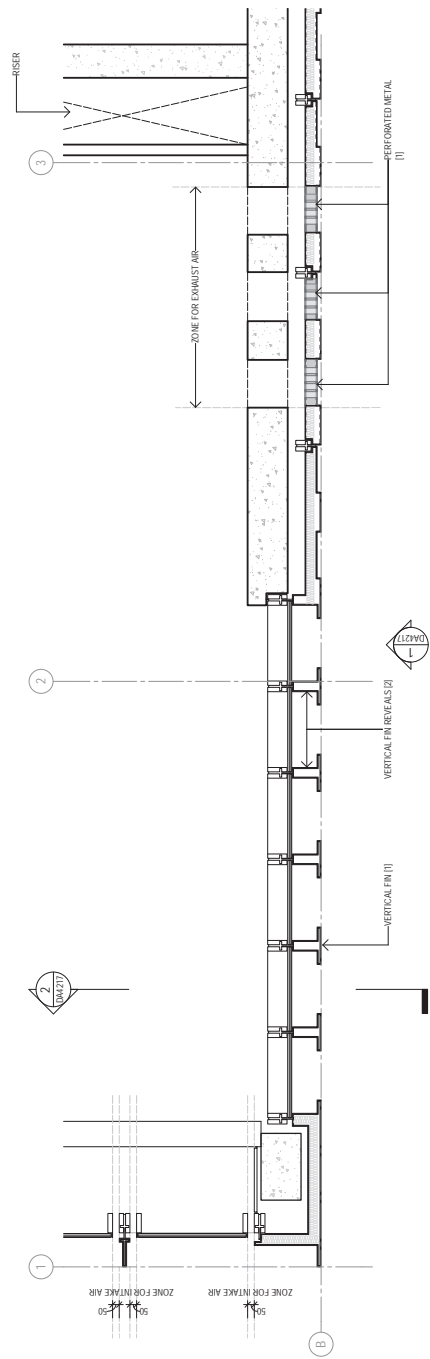


3. PLAN



189

1 ELEVATION



3 PLAN

2 SECTION

<p>Revised 17/02/2021 11:50:28 PM</p> <p>Approved 7/2/2021 11:50:28 PM</p> <p>Author Archie@Dodge.Digital</p> <p>Project 4-6 Blyth Street</p> <p>Client Holdmark NSW Pty Ltd</p>	<p>Sheet Detail Arrangement Typical Plant Room Facade Type 1</p> <p>Revision B</p> <p>Check TD</p> <p>Drawn KD</p> <p>Scale A1</p> <p>1:20</p>	<p>Woods Bagot WOODS BAGOT</p> <p>Project No 121736</p> <p>Check TD</p> <p>Drawn KD</p> <p>Scale A1</p> <p>1:20</p>	<p>FOR SSSA</p>
--	--	---	-----------------

<p>Revised 19/12/21</p> <p>Author SSS@WoodsBagot</p> <p>Project SSS@181 Response</p>	<p>Revised 18/12/21</p> <p>Author SSS@181 Response</p> <p>Project SSS@181 Response</p>
--	--

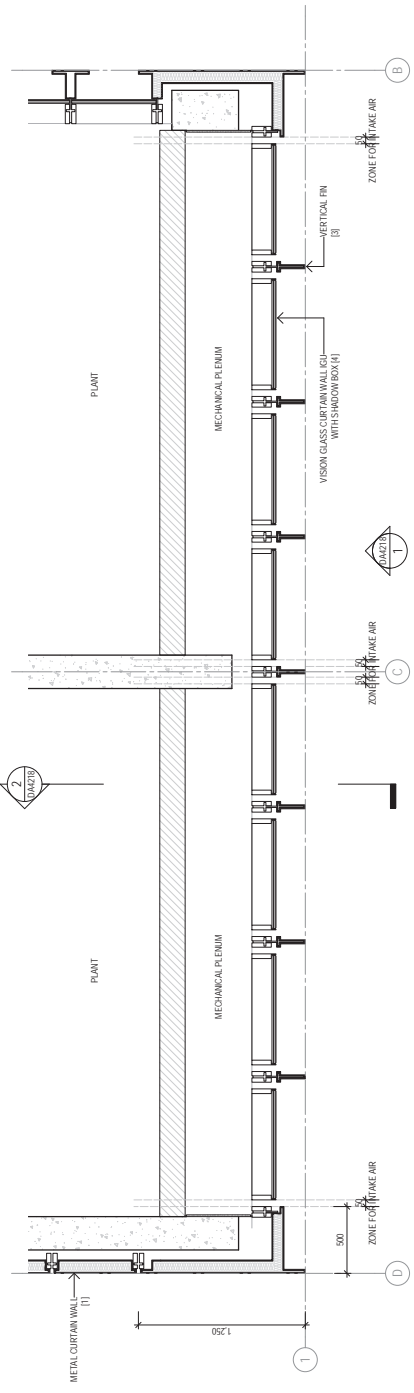
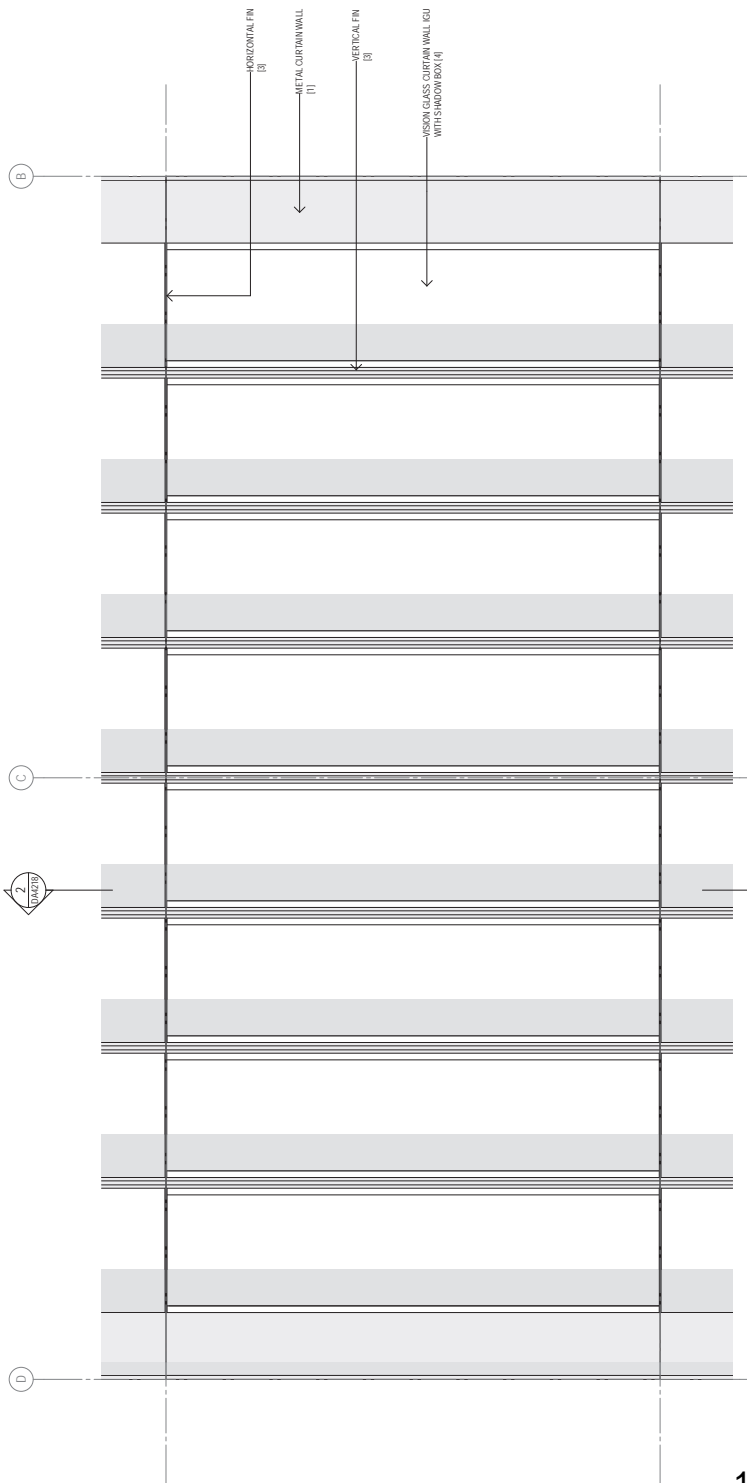
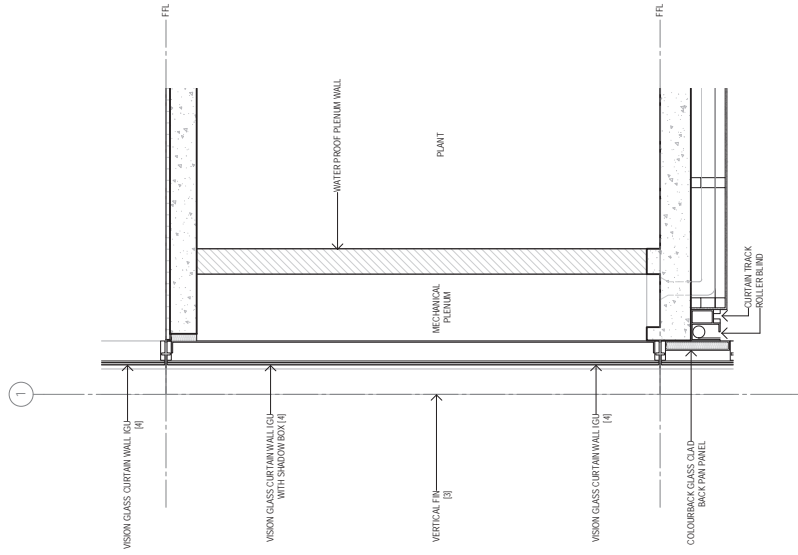
Notes

- Original © Woods Bagot 2018
- All rights reserved. No part of this publication may be reproduced without prior permission from Woods Bagot.
- Consult your architect for any dimensions on site before commencing work to prevent any discrepancies.
- Do not cut into walls.

KEY PLAN - DETAIL LOCATION

LEGEND

- (1) Upper coloured stainless steel
- (2) Upper coloured treated stainless steel
- (3) Lower coloured treated stainless steel
- (4) Colour glass
- (5) Bronze tint glass
- (6) Ribbed dark bronze anodised aluminium



190

Sheet: Detail Arrangement
 Typical Plant Room Facade Type 2

Woods Bagot
 Project No: 121736
 Check: TD
 Drawn: KD
 Scale: A1
 Date: 1.20
 For: SSDA

Project: 4-6 Bleigh Street
 Client: Holdmark NSW Pty Ltd

Notes:
 1) Copper coloured stainless steel
 2) Copper coloured treated stainless steel
 3) Copper coloured stainless steel
 4) Clear glass
 5) Bronze tint glass
 6) Ribbed oak frame to wood clad aluminium

Do not use awps

KEY PLAN - DETAIL LOCATION

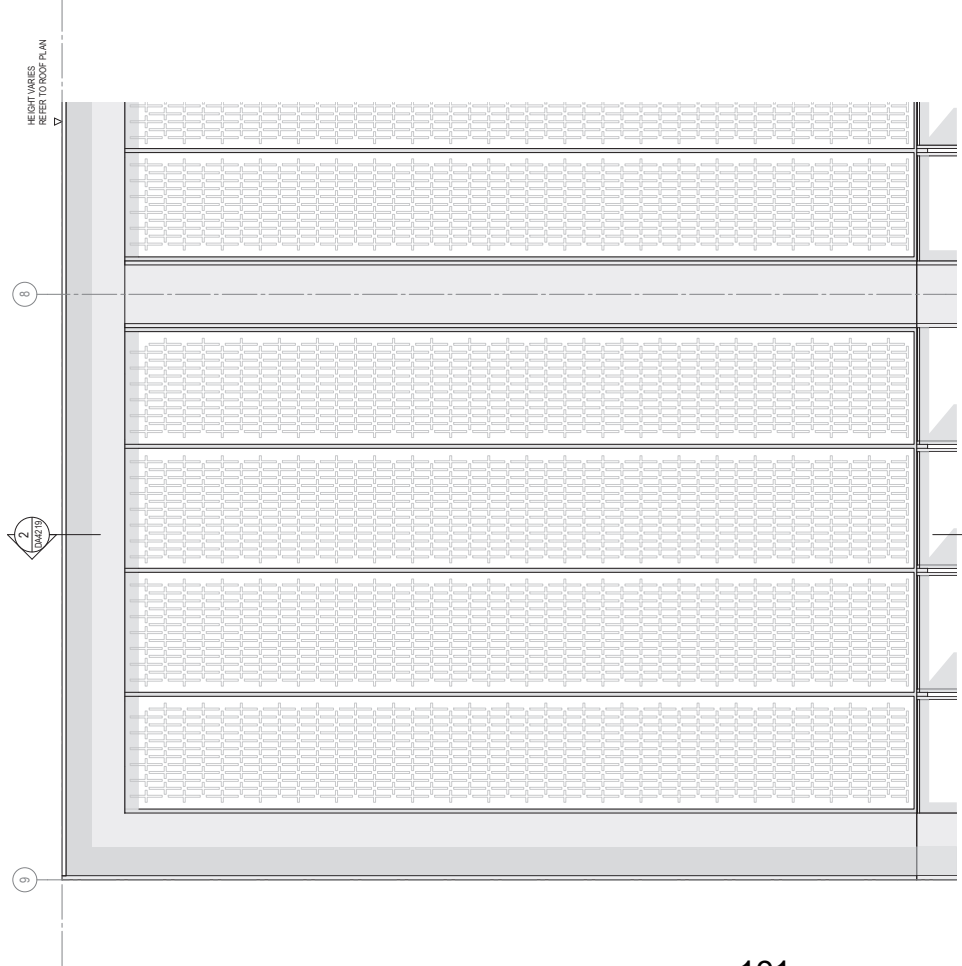
LEGEND

Revised: 19.12.22
 SSDA: SJP
 SSDA: HRP

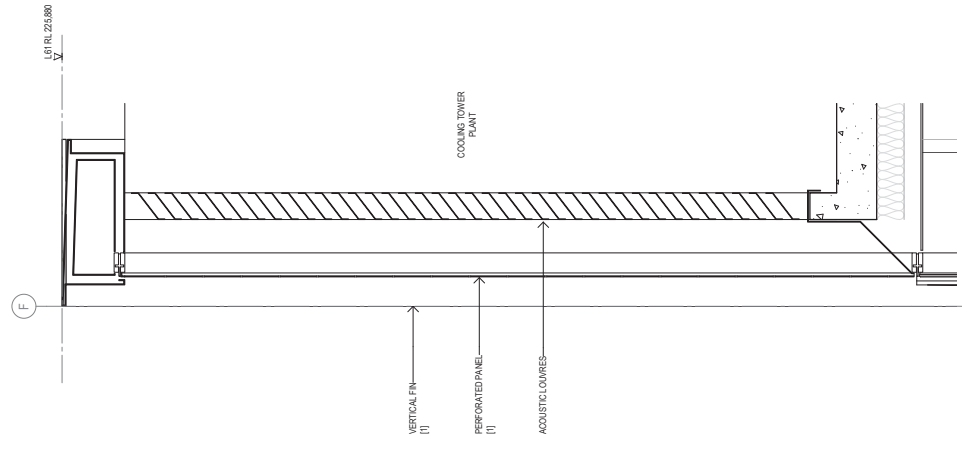
Date: 19.12.22
 14.07.23

Original © Woods Bagot 2018
 All rights reserved. No part of this publication may be reproduced without prior permission.
 Contractor must verify all dimensions on site before commencing work to prevent any discrepancies.
 Do not use awps

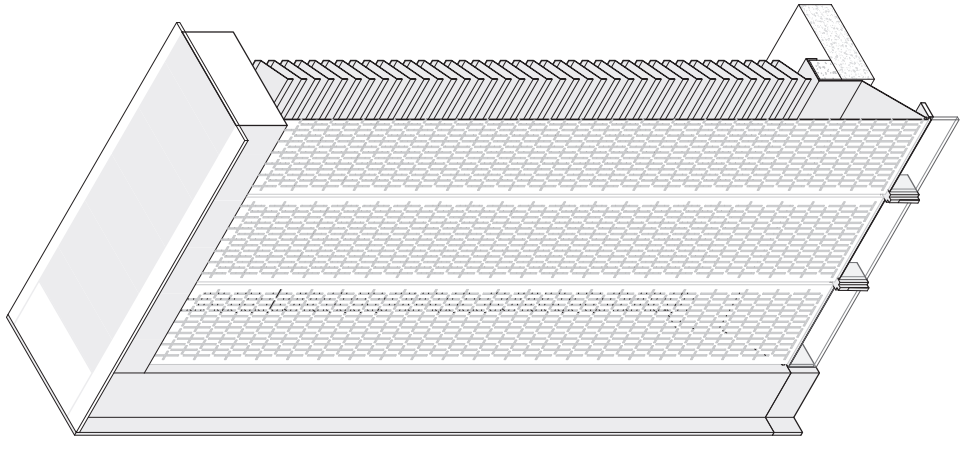
7/2/2023 11:55:54 AM Autodesk Docs://7276_44889_Sheet121212_44889_S_BLDG_C002001V1



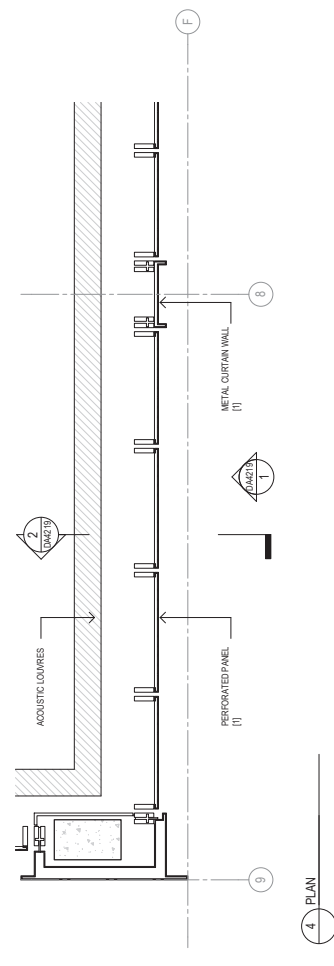
1 ELEVATION



2 SECTION



3 3D VIEW



4 PLAN

Revised

Date	By	Check	Issue
19.12.23	SSDA	SSDA	SSDA Submission
14.01.24	SSDA	SSDA	SSDA Response
21.01.24	SSDA	SSDA	SSDA Response

Notes

- Copyright © Woods Bagot 2018
- All rights reserved. No part of this document may be reproduced without prior permission.
- Contractor must verify all dimensions on site before commencing work to prevent any slip/slopes.
- Do not scale drawings.

KEY PLAN - DETAIL LOCATION

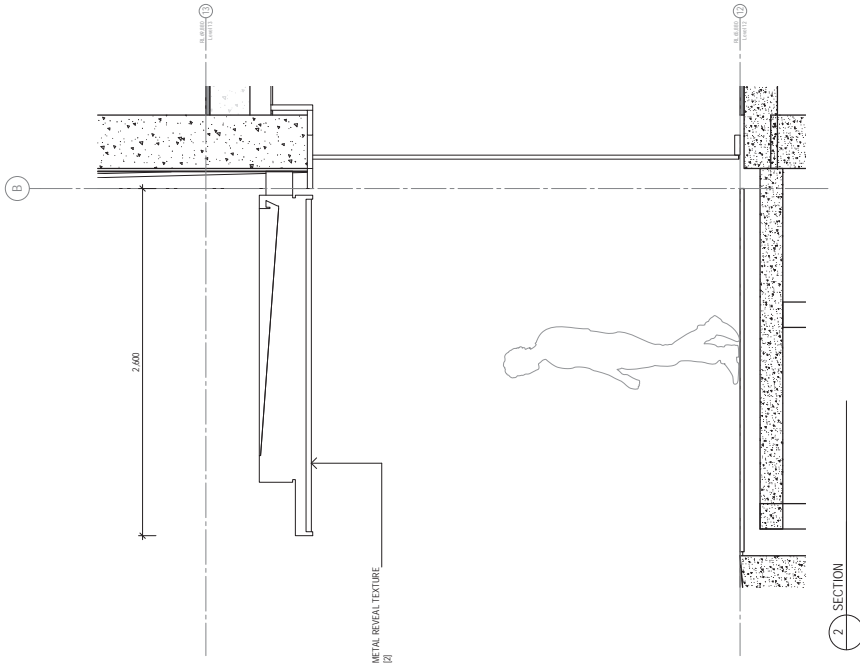
LEGEND

- (1) Copper coloured stainless steel
- (2) Copper coloured textured stainless steel
- (3) Copper coloured stainless steel
- (4) Clear glass
- (5) Bronze tint glass
- (6) Ribbed aluminium frame and fixed aluminium

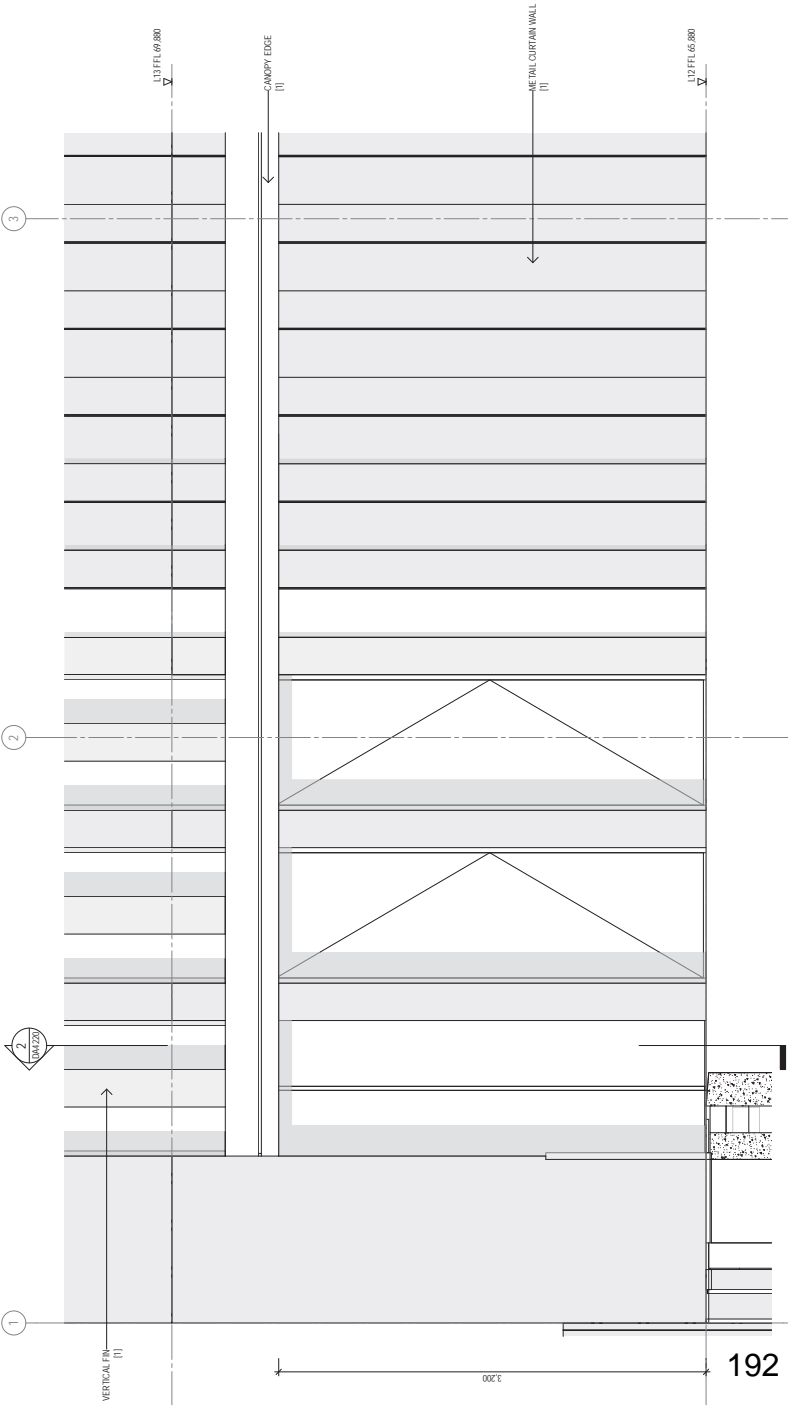
Project
4-6 Bleigh Street
Client
Holdmark NSW Pty Ltd

Woods Bagot
W-B™
Project Number
121736
Checked
TD
Designed
KD
Scale
A1
Sheet Size
FOR SSDA

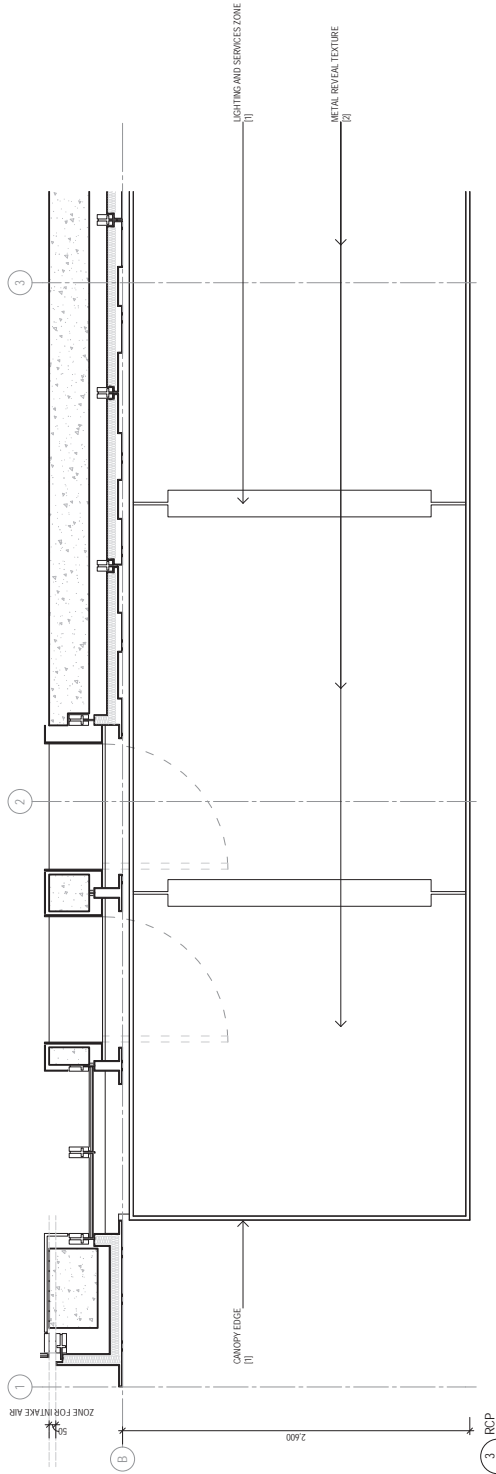
Sheet Title
Detail Arrangement
Typical Plant Room Facade Type 3
Revision
C
Scale
1:20



2 SECTION



1 ELEVATION



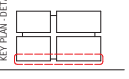
3 RCP

Sheet: Detail Arrangement Level 12 Canopy
 Project: 4-6 Bligh Street
 Client: Holdmark NSW Pty Ltd
 Date: 19/12/22
 Drawn: SSS/SJ/epm
 Checked: TD
 Scale: A1
 Status: FOR SDA
 Revision: B

W-B
 WOODS BAGOT
 Project Number: 121736
 Checked: TD
 Drawn: KD
 Scale: A1
 Status: FOR SDA

Project: 4-6 Bligh Street
 Client: Holdmark NSW Pty Ltd

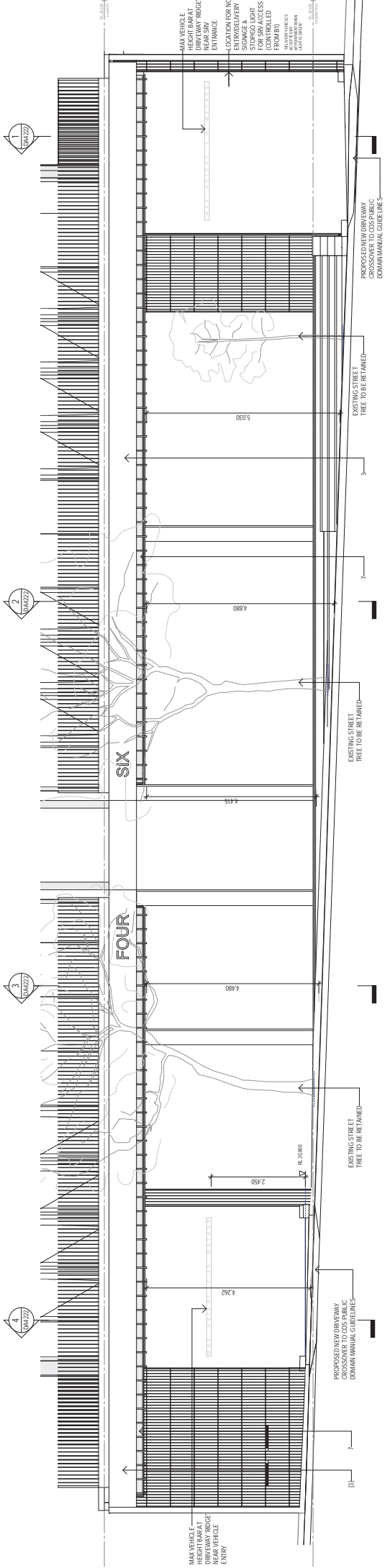
- LEGEND
- (1) Copper coloured stainless steel
 - (2) Copper coloured treated stainless steel
 - (3) Copper coloured treated stainless steel
 - (4) CHS 48x3.5
 - (5) Bronze 1st Class
 - (6) Ribbed cast concrete modified aluminium



Notes

- Original © Woods Bagot 2018
- All rights reserved. No part of this publication may be reproduced without prior permission.
- Contractor must verify all dimensions on site before commencing work to prevent any errors.
- Do not cut on awnings.

Revised: 19/12/22
 Date: 19/12/22
 Drawn: SSS/SJ/epm
 Checked: TD
 Scale: A1
 Status: FOR SDA



1. DETAIL PLAN - GROUND FLOOR STREET INTERFACE
SCALE 1:50

2. DETAIL ELEVATION - GROUND PLANE FACADE
SCALE 1:50

LEGEND

- (1) Copper coloured stainless steel
- (2) Copper coloured textured stainless steel
- (3) Copper coloured stainless steel
- (4) Copper brass
- (5) Bronze tint glass
- (6) Polished dark bronze anodised aluminium
- (7) Dark bronze anodised aluminium
- (8) Sandstone cladding
- (9) Stone foreshy public walk paving
- (10) Stone lobby paving
- (11) Stone foreshy public walk paving
- (12) Stone lobby paving
- (13) Stone driveway paving
- (14) Sandstone granite
- (15) Sandstone granite
- (16) Sandstone granite
- (17) Sandstone granite
- (18) Sandstone granite
- (19) Sandstone granite
- (20) Sandstone granite
- (21) Sandstone granite
- (22) Sandstone granite
- (23) Sandstone granite
- (24) Sandstone granite
- (25) Sandstone granite
- (26) Sandstone granite
- (27) Sandstone granite
- (28) Sandstone granite
- (29) Sandstone granite
- (30) Sandstone granite
- (31) Sandstone granite
- (32) Sandstone granite
- (33) Sandstone granite
- (34) Sandstone granite
- (35) Sandstone granite
- (36) Sandstone granite
- (37) Sandstone granite
- (38) Sandstone granite
- (39) Sandstone granite
- (40) Sandstone granite
- (41) Sandstone granite
- (42) Sandstone granite
- (43) Sandstone granite
- (44) Sandstone granite
- (45) Sandstone granite
- (46) Sandstone granite
- (47) Sandstone granite
- (48) Sandstone granite
- (49) Sandstone granite
- (50) Sandstone granite
- (51) Sandstone granite
- (52) Sandstone granite
- (53) Sandstone granite
- (54) Sandstone granite
- (55) Sandstone granite
- (56) Sandstone granite
- (57) Sandstone granite
- (58) Sandstone granite
- (59) Sandstone granite
- (60) Sandstone granite
- (61) Sandstone granite
- (62) Sandstone granite
- (63) Sandstone granite
- (64) Sandstone granite
- (65) Sandstone granite
- (66) Sandstone granite
- (67) Sandstone granite
- (68) Sandstone granite
- (69) Sandstone granite
- (70) Sandstone granite
- (71) Sandstone granite
- (72) Sandstone granite
- (73) Sandstone granite
- (74) Sandstone granite
- (75) Sandstone granite
- (76) Sandstone granite
- (77) Sandstone granite
- (78) Sandstone granite
- (79) Sandstone granite
- (80) Sandstone granite
- (81) Sandstone granite
- (82) Sandstone granite
- (83) Sandstone granite
- (84) Sandstone granite
- (85) Sandstone granite
- (86) Sandstone granite
- (87) Sandstone granite
- (88) Sandstone granite
- (89) Sandstone granite
- (90) Sandstone granite
- (91) Sandstone granite
- (92) Sandstone granite
- (93) Sandstone granite
- (94) Sandstone granite
- (95) Sandstone granite
- (96) Sandstone granite
- (97) Sandstone granite
- (98) Sandstone granite
- (99) Sandstone granite
- (100) Sandstone granite

KEY PLAN - DETAIL LOCATION

Notes

- Original © Woods Bagot 2018
- 10/23
- SSS&H Engineering
- For material quantities, refer to the main plan.
- Contractor to verify all dimensions on site before commencing work to prevent any errors.
- Do not cut or saw.

Revised

- Date: 10/23
- By: SSS&H Engineering

Client

Holdmark NSW Pty Ltd

Project

4-6 Bligh Street

Sheet

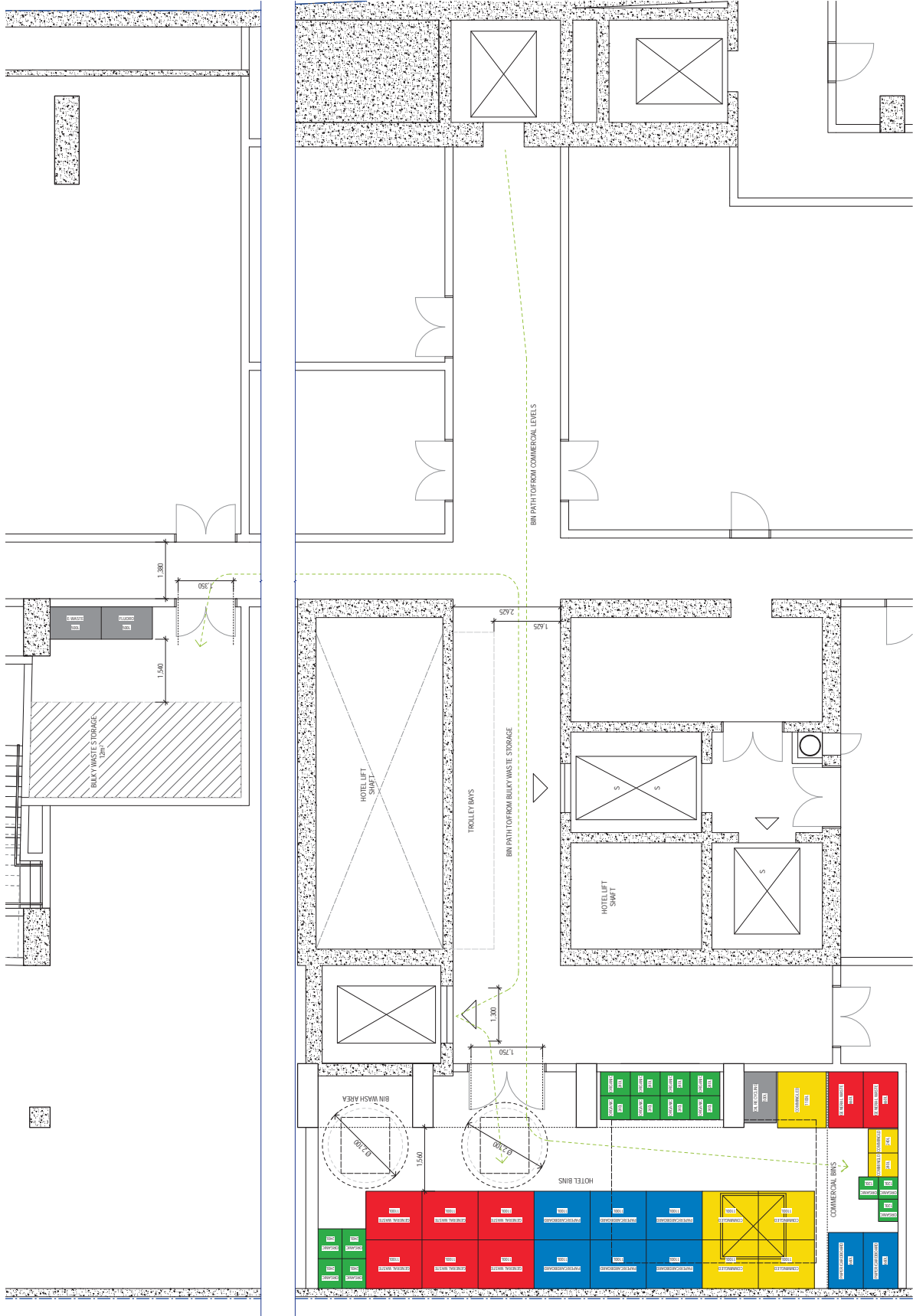
Detail Arrangement
Public Domain Plan & Elevation

Woods Bagot

121736
10/23

DA421
A

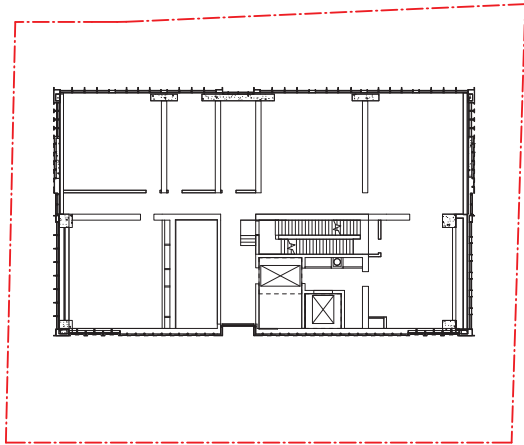
FOR INFORMATION



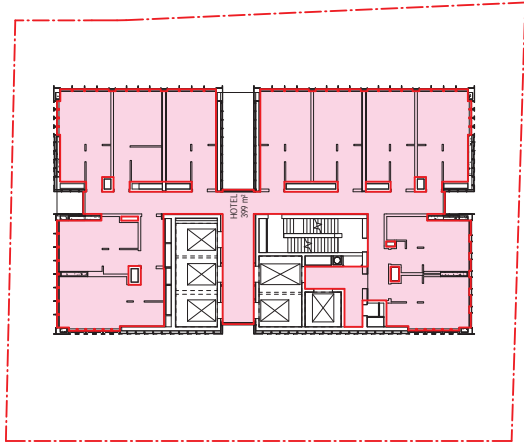
1. DETAIL PLAN - B03 - BIN ARRANGEMENT
SCALE 1:50

<p>Sheet No Detail Arrangement Basement 3 Waste Management</p>	<p>Checked by DA423</p>	<p>Revision A</p>
<p>W-B WOODS BAGOT</p>		
<p>Project 4-6 Blyth Street</p>	<p>Client Holdmark NSW Pty Ltd</p>	<p>Scale 1:50</p>
<p>Drawn by TD</p>	<p>Checked by KD</p>	<p>Scale 1:50</p>
<p>FOR INFORMATION</p>		

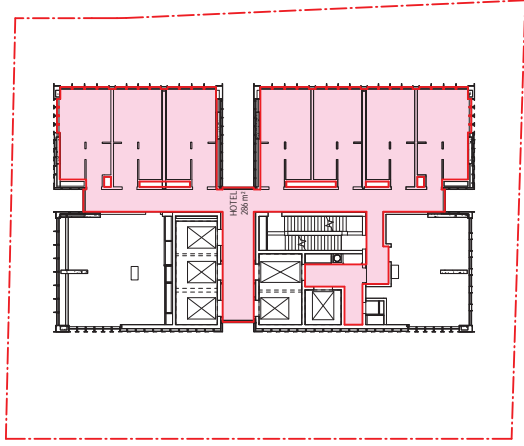
<p>Notes</p>	<p>Date 14/12/23</p>
<p>1. Original © Woods Bagot 2018 All rights reserved. No material may be reproduced without prior permission. Contractor must verify all dimensions on site before commencing work to prevent any discrepancies. Do not scale drawings.</p>	<p>Drawn by SUSAN HILL</p>
<p>Approved: 7/4/2023 10:52 AM Approved: 02/01/2024 4:48 PM S. BULLING, COORDINATOR</p>	



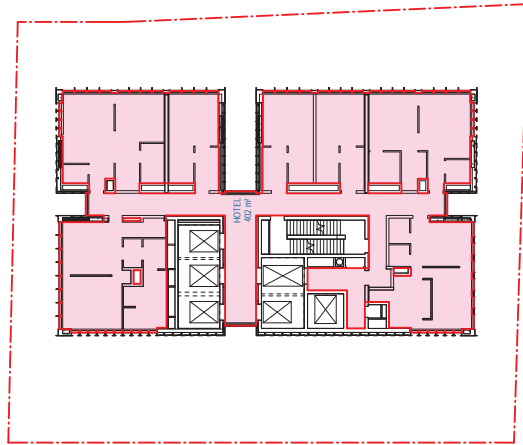
1 Level 13 (Plant)



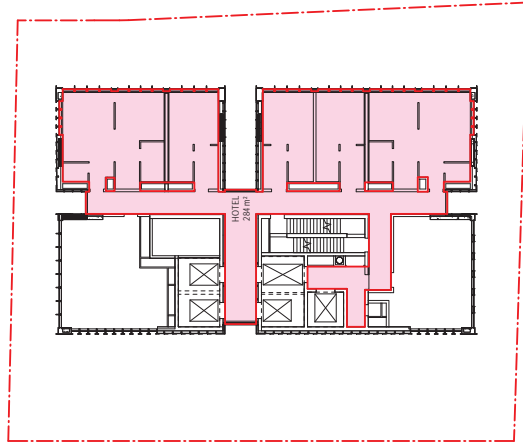
2 Levels 14, 32, & 34-45 (Hotel)



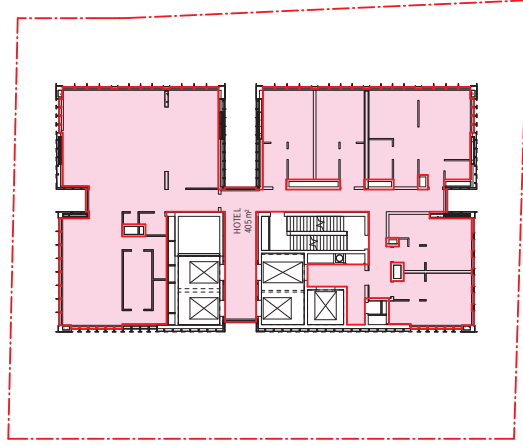
3 Level 33 (Plant/Hotel)



4 Level 46 (Typical 46-53)



5 Levels 54 (Plant/Hotel)



6 Level 55 (Penthouse)

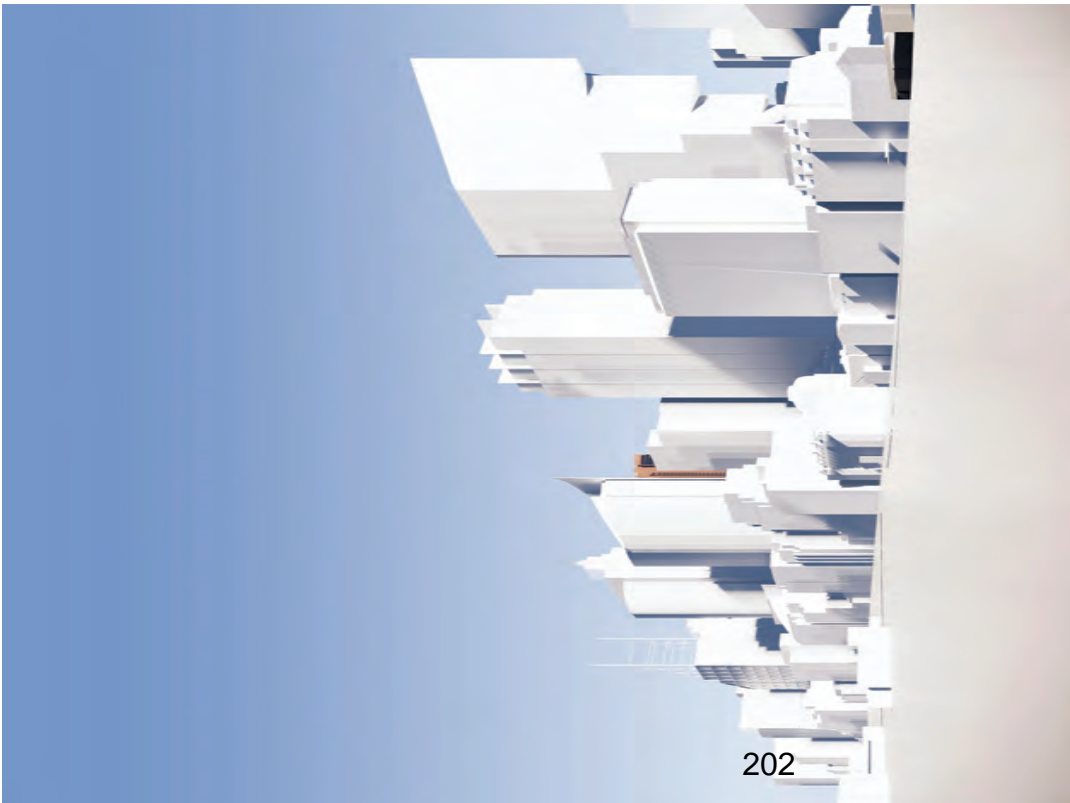


View Location Plan

- 01 - View from the Harbour Bridge
- 02 - View from the Open House
- 03 - View from the Open House (RCA)
- 04 - View from Circular Quay Train Station
- 05 - View from the Botanical Gardens
- 06 - View from the Botanical Gardens
- 07 - View from the Domain
- 08 - View from Elizabeth Street with City Willam Street
- 09 - View from Elizabeth Street with City Liverpool Street
- 10 - View from the Australian Museum, Museum



VIEW 06



VIEW 05

<p>Project 4-6 Bligh Street</p> <p>Client Holdmark NSW Pty Ltd</p>	<p>Issue W-B™ WOODS BAGOT</p> <p>Project No 121736</p> <p>Checklist TD</p> <p>Drawings KO</p> <p>Station A1</p> <p>Scale 1:100</p>	<p>Sheet No Townscape Renders</p> <p>Revision B</p> <p>Drawn by DA7003</p> <p>Scale Sheet</p>
<p>Revised A</p> <p>Revised B</p>	<p>Date 19/12/22</p> <p>SS2/AS/Part 100</p> <p>SS2/AS/Part 100</p>	<p>Notes</p> <p>Copyright © Woods Bagot 2018</p> <p>All rights reserved. No part of this publication may be reproduced, stored in a retrieval system, or transmitted in any form or by any means, electronic, mechanical, photocopying, recording, or by any information storage and retrieval system, without permission in writing from Woods Bagot.</p> <p>Do not scale drawings.</p>

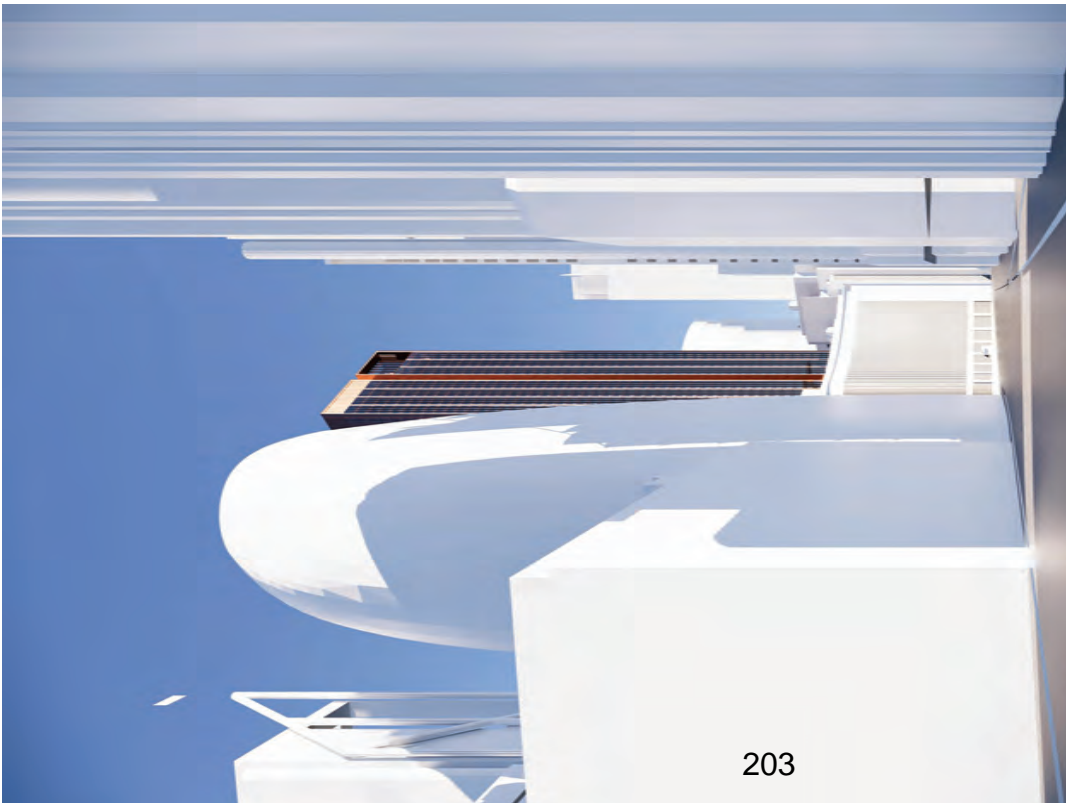


View Location Plan

- 01 - View from the Harbour Bridge
- 02 - View from the Open House
- 03 - View from the Sydney Opera House (MCA)
- 04 - View from Circular Quay Train Station
- 05 - View from the Botanical Gardens
- 06 - View from the Sydney Harbour Bridge
- 07 - View from the Domain
- 08 - View from Elizabeth Street with City Willam Street
- 09 - View from Elizabeth Street with City Liverpool Street
- 10 - View from the Australian Museum



VIEW 08



VIEW 07

Revised	01/08/2023	01/08/2023	01/08/2023
Author	SS2045/18/2023	SS2045/18/2023	SS2045/18/2023
Check	SS2045/18/2023	SS2045/18/2023	SS2045/18/2023
Drawn	SS2045/18/2023	SS2045/18/2023	SS2045/18/2023

Copyright © Woods Bagot 2018
 All rights reserved. No part of this publication may be reproduced without prior permission.
 Content may vary without notification on site before commencing work or preparing shop drawings.
 Do not scale drawings.

Project	4-6 Bleigh Street
Client	Holdmark NSW Pty Ltd

Year	2023
Woods Bagot	
Project No.	121736
Check	TD
Drawn	KD
Scale	A1
Sheet No.	1 of 10

Sheet No.	1 of 10
Project No.	DA7004
Scale	B

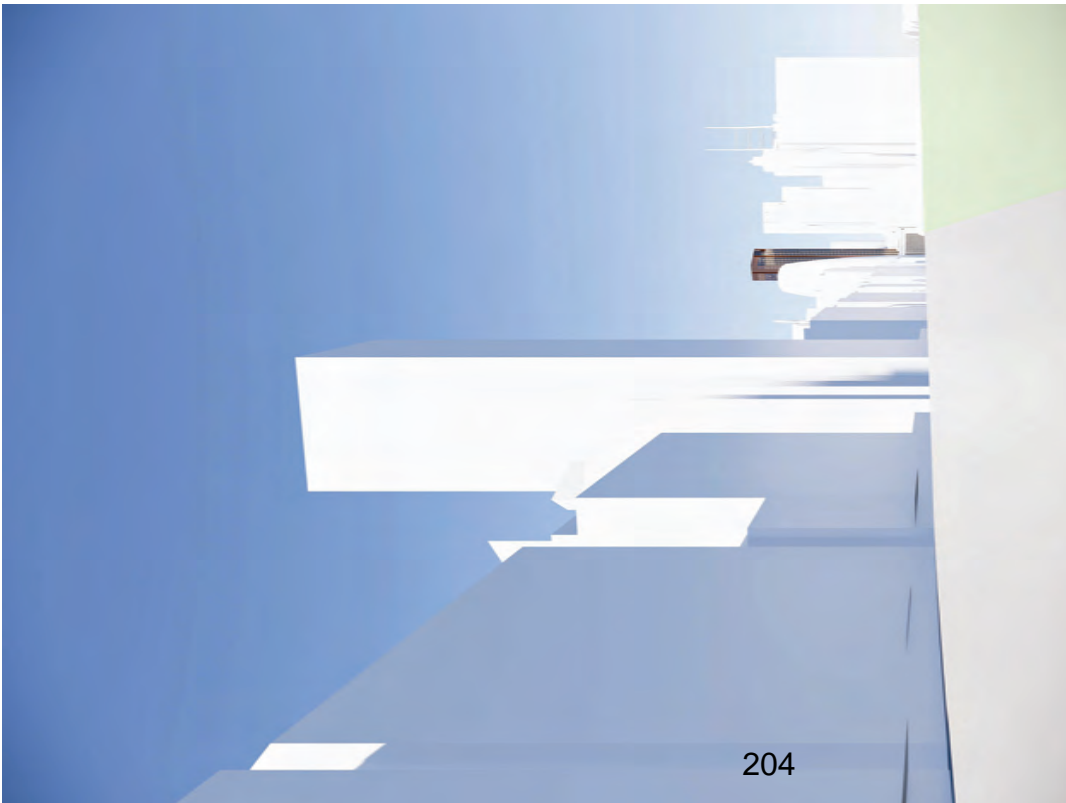


View Location Plan

- 01 - View from the Harbour Bridge
- 02 - View from the Open House
- 03 - View from the Open House
- 04 - View from Circular Quay Train Station
- 05 - View from the Botanical Gardens
- 06 - View from the Botanical Gardens
- 07 - View from the Botanical Gardens
- 08 - View from Elizabeth Street with City Willam Street
- 09 - View from Elizabeth Street with City Liverpool Street
- 10 - View from the Australian National Museum



VIEW 10



VIEW 09

<p>Revised: 7/2/2023 11:23:18 AM Author: A Designer: B</p>	<p>Project: 2023-01-01 Title: 2023-01-01</p>	<p>Client: 2023-01-01 Address: 2023-01-01</p>	<p>Scale: 1:100 Date: 2023-01-01</p>
--	---	--	---

<p>Project: 4-6 Bleigh Street Client: Holdmark NSW Pty Ltd</p>	<p>Project: 4-6 Bleigh Street Client: Holdmark NSW Pty Ltd</p>
---	---

<p>Project: 4-6 Bleigh Street Client: Holdmark NSW Pty Ltd</p>	<p>Project: 4-6 Bleigh Street Client: Holdmark NSW Pty Ltd</p>
---	---



Project: 4-6 Bleigh Street
 Client: Holdmark NSW Pty Ltd
 Date: 09/12/22
 Designer: S23AS/Prattson
 Architect: S23AS/Prattson
 Notes: Copyright © Woods Bagot 2018
 All rights reserved. No part of this publication may be reproduced without prior permission.
 Contractor must verify all dimensions on site before commencing work to prevent any discrepancies.
 Do not scale drawings.

Sheet: Ground Level Render
 Scale: 1:100
 Date: 09/12/22
 Drawn: S23AS/Prattson
 Checked: TD
 Approved: KD
 Status: A1

Sheet: Ground Level Render
 Scale: 1:100
 Date: 09/12/22
 Drawn: S23AS/Prattson
 Checked: TD
 Approved: KD
 Status: A1



Notes

- 1. Original © Woods Bagot 2018
 - 2. 19/12/21
 - 3. 25/05/2020
 - 4. 10/02/21
- Contractor must verify all dimensions on site before commencing work to prevent any errors.
- Do not cut area aways.

Revised content history

- A 2021
- B 2021
- B 2021

Project

4-6 Bligh Street

Client

Holdmark NSW Pty Ltd

Drawn

W-B
WOODS BAGOT

Project Number
121736

City
Charlotte
NC

State
North Carolina

Sheet#

Bligh Street Render

Checked by
DA7007

Scale
1:100



Scale

Zone
Zone 1

Station
Station 10

Region
Region 10

County
County 10

City
City 10



Notes

Copyright © Woods Bagot 2018
 All rights reserved.
 No material may be reproduced without prior permission.
 Contractor must verify all dimensions on site before commencing
 work to prevent any discrepancies.
 Do not cut area aways.

Revised/History

Date	Description
19/12/22	S22AS-Part 208
18/02/23	S22AS-015 Response

Project

4-6 Bleigh Street
 Client: Holdmark NSW Pty Ltd

Drawn

W-B
WOODS BAGOT
 Project Number: 1217736
 Checked: TD
 Drawn: KD
 Scale: A1

Sheet/Title

Aerial View Render
 Sheet Number: DA7008
 Scale: B



Project: 712003.11.2018 PM - Adelaide-Docs\017736_44-889-Site\CD\02-44-889-Site-BUILDING_COORD\001
 Version: 1
 Date: 18/12/21
 Designer: S22AS-Perth
 Checker: S22AS-Perth
 Status: 18/12/21
 Copyright © Woods Bagot 2018
 All rights reserved.
 No material may be reproduced without prior permission.
 Contractor must verify all dimensions on site before commencing work to prevent any disputes.
 Do not scale drawings.

Project: 4-6 Blich Street
 Client: Holdmark NSW Pty Ltd

Sheet: City View Render
 W-B
 WOODS BAGOT
 121736
 Check: TD
 Drawn: KD
 Dimension: AT
 Scale: 1:1000

Sheet: City View Render
 W-B
 WOODS BAGOT
 121736
 Check: TD
 Drawn: KD
 Dimension: AT
 Scale: 1:1000



Recent consultation history	Discipline	Date	Notes
A	3d/4d	19/12/23	Original © Woods Bagot 2018
A	3D/4D Presentation	18/02/23	All material may be reproduced without prior permission
B	3D/4D Presentation		Consultant may not publish information on this before commencing work or preparing shop drawings.
			Do not cut or aways.

7/3/2023 11:23:18 PM Autodesk Docs (72736_44889) Sheet (2) of 4 8/8p - 51_BUBDING_CAD020301

Project
4-6 Bleigh Street

Client
Holdmark NSW Pty Ltd

Year
W-B
WOODS BAGOT

Project Number
121736

Client Code
TD

Contract
KD

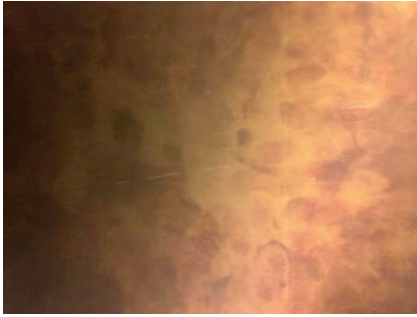
Designation
AT

Scale
Scale

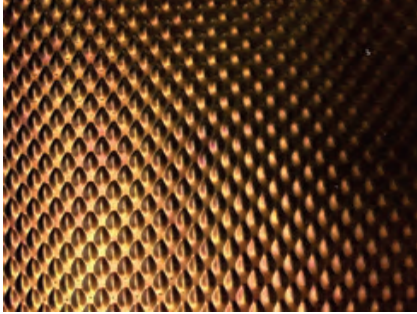
Sheetfile
Domain Render

Sheet Number
DA7010

Revision
B



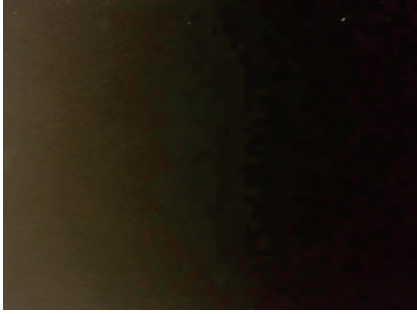
1) COPPER COLOURED STAINLESS STEEL
Finish: Royal Gold Grain



2) COPPER COLOURED TEXTURED STAINLESS STEEL
Finish: Royal Gold Grain



3) DARK BRONZE COLOURED STAINLESS STEEL
Finish: Black/Dark Bronze



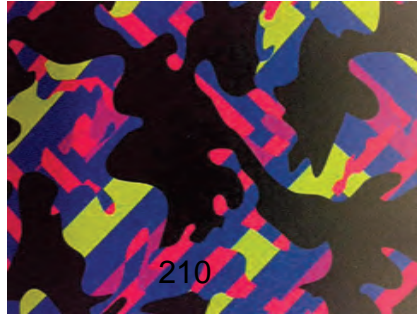
6) RIBBED DARK BRONZE ANODISED ALUMINIUM
Finish: Universal Anodisers Salt Espresso



7) OXIDISED COPPER
Finish: TEAL Palm verdigis copper



8) SANDSTONE



INDICATIVE ARTWORK CREDIT: REKO RENIE

GREENERY

Notes

Original © Wood@art 2018
All rights reserved
All material may be reproduced without prior permission
Consult our website for all dimensions on all before commencing work on preparation drawings
Do not cut or warp

Date: 19/12/21
18/12/21

Project:
S2545 Parkside
S2545515 Response

Drawn:
A: S2545
B: S2545

LEGEND

1) Copper coloured stainless steel - Finish: Royal Gold Grain
2) Copper coloured textured stainless steel - Finish: Royal Gold Grain
3) Dark bronze coloured stainless steel - Finish: Black/Dark Bronze
4) Clear glass
5) Clear glass
6) Ribbed dark bronze anodised aluminium - Universal Anodisers Salt Espresso
7) Oxidised Copper - Finish: TEAL Palm verdigis copper
8) Sandstone cladding

Project:
4-6 Bleigh Street
Client:
Holdmark NSW Pty Ltd

W-B™
WOODS BAGOT

Project No: 121736
Checklist: TD
Scale: A1
Format: KD
Scale: 1:500

Materials
Finishes board

Sheet No: DA9001
Checklist: B
Scale: FOR SSDA